

State of Alaska

Department of Transportation
and Public Facilities
Southeast Region

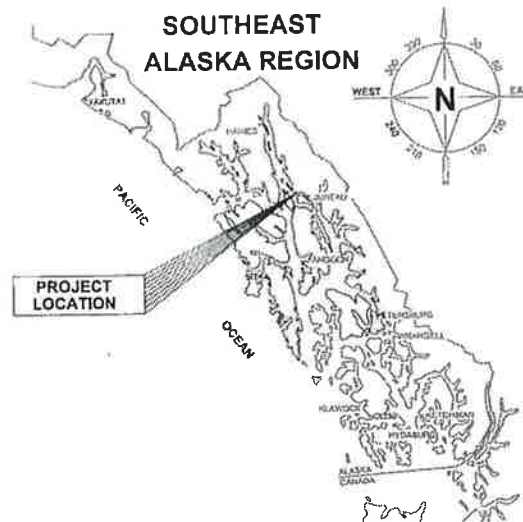
JUNEAU, ALASKA EGAN DRIVE MULTI-USE PATH REPAIR AND BRIDGE #6011 REPLACEMENT

PROJECT No. 0932(052) / 68092

The undersigned hereby certifies that this duplicated document is an exact and true copy of the original.

Cody Miller

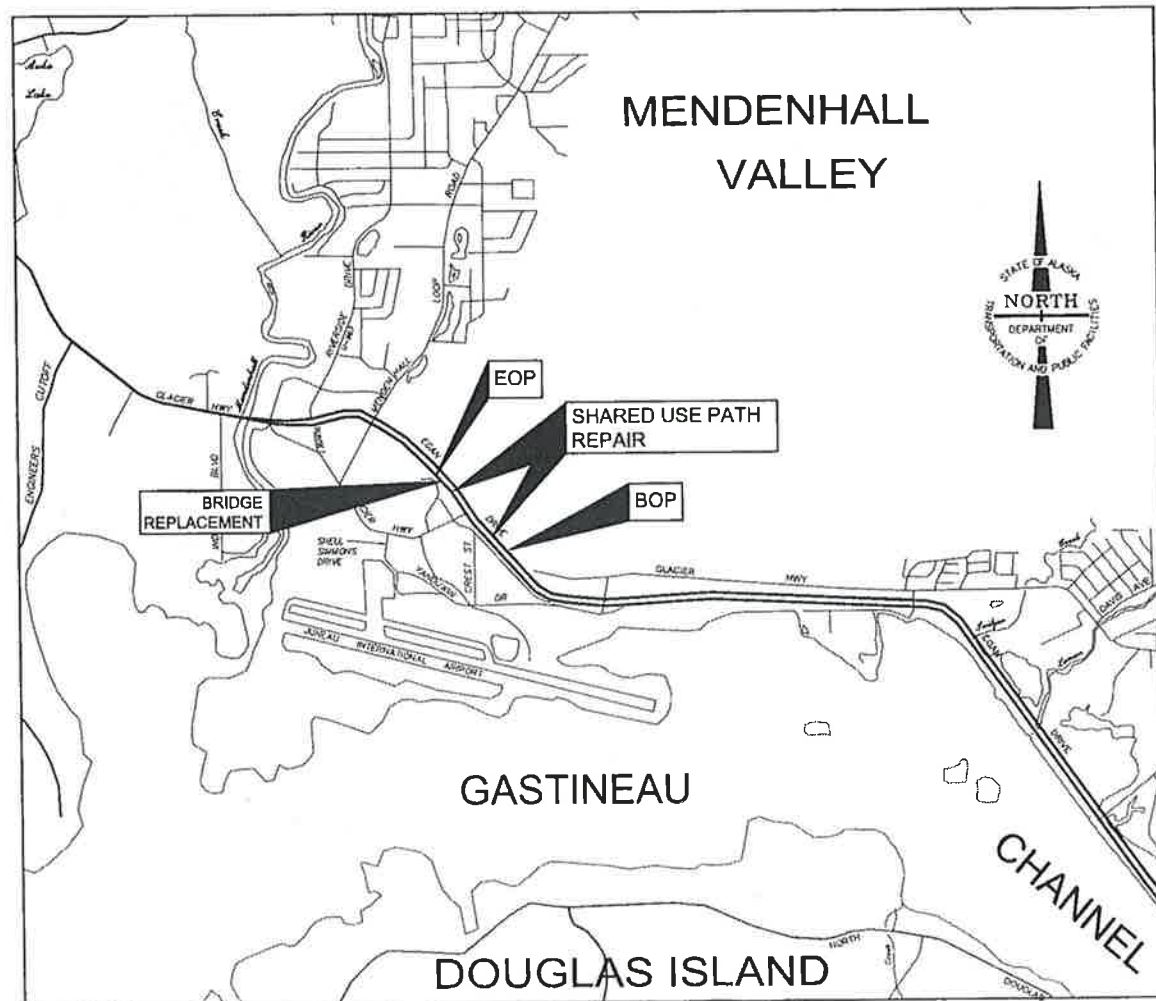
December 24, 2014



SOUTHEAST ALASKA REGION

AS-BUILT INDEX

SHEET NO.	DESCRIPTION
A1	TITLE SHEET
A2	SURVEY CONTROL
B1-B2	TYPICAL SECTIONS
C1	ESTIMATE OF QUANTITIES
D1	SUMMARIES
F1-F2	PLAN VIEW
N1-N4	PEDESTRIAN BRIDGE #6011
P1	EROSION & SEDIMENT CONTROL DETAILS
T1	TRAFFIC CONTROL
T001	BRIDGE SHOP DWG TITLE PAGE
T002	BRIDGE SHOP DWG GENERAL NOTES
T003	BRIDGE SHOP DWG BEARING + ANCHOR BOLT
S101-S107	BRIDGE SHOP DRAWINGS



VICINITY MAP

AS BUILT DRAWINGS
CONTRACTOR: TRUKANO CONSTRUCTION
PROJECT ENGINEER: ANDREW CONRAD
START DATE: 18TH - MAY - 2015
END DATE: 24TH - JULY - 2015

PROJECT SUMMARY

CDS ROUTE NO.	=	296000
CDS MILEPOINT	=	7.812 to 8.177
CDS MILEPOINT (29600SB)	=	0.891 to 0.906
LENGTH OF PROJECT	=	2300 FT
LENGTH OF PAVING	=	150 FT
WIDTH OF PAVING	=	10' FT

THE FOLLOWING STANDARD DRAWINGS APPLY TO THIS PROJECT:

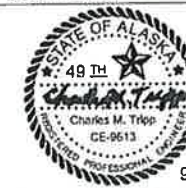
A-1	S-00.10
D-01.02	S-05.01
D-04.21	S-20.10
E-13.00	S-30.03
F-01.01	

ROUTE: 296000
296000 SB MILEPOINT: 7.812 TO 8.177
0.891 TO 0.906

PATH: Q:\UNL68092\PLANSET\68092_A1 TSHT.DWG TAB:A1

Monday, April 28, 2014 8:55:14 AM
PLOT: PSPACE OR MSPACE: 1=1(F)

STATE OF ALASKA
DEPARTMENT OF TRANSPORTATION
& PUBLIC FACILITIES
SOUTHEAST REGION



APPROVED: *Pat Carroll* 9/2/14
REGIONAL PRE-CONSTRUCTION ENGINEER DATE
L. PAT CARROLL, P.E.

APPROVED: *Chuck Correa* 9/2/14
CHUCK CORREA, P.E. DATE
DIRECTOR OF DESIGN AND CONSTRUCTION, SOUTHEAST REGION

CERTIFIED TRUE & CORRECT AS-BUILT OF ACTUAL FIELD CONDITION.
Catherine Wilkins 17-Aug-2015
CONSTRUCTION PROJECT MANAGER DATE
Catherine Wilkins, AIA

STATE	PROJECT DESIGNATION	YEAR	SHEET NO.	TOTAL SHEETS
ALASKA	0932(52) / 68092	2014	A1	14

HORIZONTAL CONTROL

Horizontal Control for this project is based on the DOT/PF 2000 Juneau Grid

The DOT/PF Juneau Grid-2000 System is a local ground coordinate system based at US&GS first order control station EDDIE. It relates to AKSPC zone 1 NAD83 (1992) through the following parameters:
 Zone = NAD83 (1992) AKSPC ZONE 1
 Grid Scale = 0.999928875
 Convergence = -0°45'27.26"
 Translation about US&GS point EDDIE as follows:
 AKSPC Northing = 2383469.17310 FT US
 AKSPC Easting = 2512570.06318 FT US
 Local Northing = 500000.0000 FT US
 Local Easting = 500000.0000 FT US

Project Specific Horizontal Control

100 : Survspike and washer set by others in asphalt bike path North West of Jordan Creek pedestrian bridge.

JNU-Grid N 503783.86 FT US, E 498195.11 FT US
 AKSPC ZONE1 N 2387276.29 FT US, E 2510815.48 FT US

101 : Mag nail with orange plastic washer set in asphalt bike path South East of Jordan Creek pedestrian bridge

JNU-Grid N 503516.07 FT US, E 498394.89 FT US
 AKSPC ZONE1 N 2387005.91 FT US, E 2511011.69 FT US

VERTICAL CONTROL

The Vertical Datum for JNU Grid-2000 is MLLW Gastineau Channel tidal datum based on third order differential levels and supplemented with GEOD '99 modeled orthometric heights. The tidal epoch is 1960-1978, but this epoch has been updated with a 5 year observation period from Jan '94 to Dec '98 published Nov '99. The latest NOS publication (10-2011) on the 1983-2001 tidal epoch indicates the datum has risen 0.32'.

The Project Specific Basis of Vertical Control is point # 517 "TBM BROTHER" Which is a 3.5" brass cap located in the north east abutment of Brotherhood Bridge. TBM-Brother has an observed elevation of 39.41 feet above MLLW.

ALIGNMENT B					
Tag	STATION	NORTHING	EASTING	DISTANCE	BEARING
L1	15+00.00	503343.90	498495.05	108.10	N33° 30' 31.3"W
L2	16+08.10	503434.03	498435.37	28.17	N30° 58' 23.3"W
L3	16+36.27	503458.19	498420.87	167.98	N34° 32' 10.2"W
L4	18+04.25	503596.57	498325.64	35.67	N38° 49' 03.8"W
L5	18+39.93	503624.36	498303.27	48.29	N33° 47' 40.8"W

Record Drawings have been reviewed by the Project Engineer, and represent to the best of my knowledge, the project as constructed.
 PE *[Signature]* Date 12-Aug-15

ALL MONUMENTS IN THE CONTROL TABLE ARE PROVIDED STRICTLY FOR SURVEY CONTROL. SHOULD ANY OF THEM BE DESTROYED DURING CONSTRUCTION THEY SHALL NOT BE REPLACED.

Point Table				
Point #	Northing	Easting	Elevation	Description
100	503783.86	498195.11	30.31	SURVSPIKE
101	503516.07	498394.89	29.72	MAG/WASH
102	503265.46	498552.70	31.18	MAG/WASH
150	501626.87	500216.42	26.82	MAG/WASH
151	501365.96	501056.05	31.18	ALCAP_DIGMON
204	502854.72	499069.81	29.04	MAG/WASH_SET
205	503081.89	498888.33	29.30	MAG/WASH_SET

MONUMENT NOTES:

1. If any pair of control points disagrees from published value by more than 1:10,000 horizontally or vertically then a third network point must be tied to ascertain which point is in error or has been disturbed.

2. Whether listed or not, all monuments, property markers, or accessories that will be disturbed or buried shall be referenced prior to being disturbed, and re-established in their original position and a record of monument form in accordance with A.S.34.65.040 shall be submitted to the construction engineer for review prior to recording. Coordinate values listed are for informational purposes and should be used to reset monuments only as a last resort.

CHECKED BY: D.Ignatov



DESIGNED BY: J.Johnson

DRAWN BY: J.Johnson

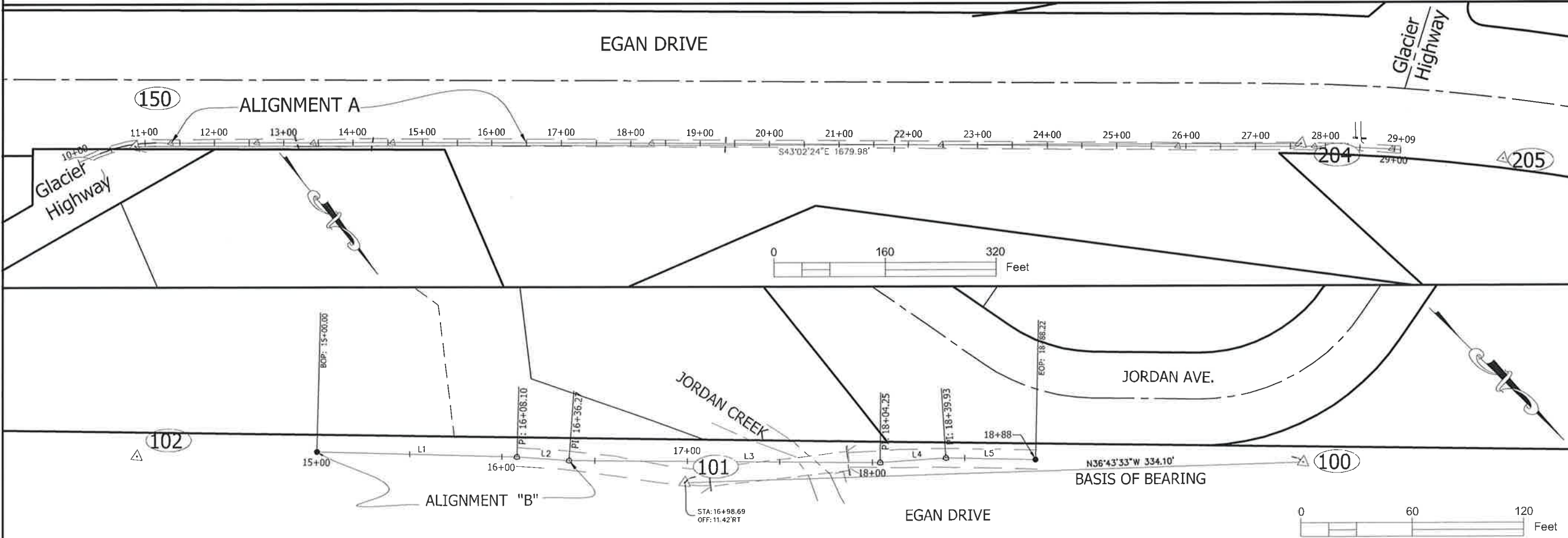
STATE OF ALASKA
 DEPARTMENT OF TRANSPORTATION
 & PUBLIC FACILITIES
 SOUTHEAST REGION

JNU EGAN DRIVE MULTI-USE
 PATH REPAIR AND BRIDGE
 #6011 REPLACEMENT
 PROJECT No. 0932(052) / 68092

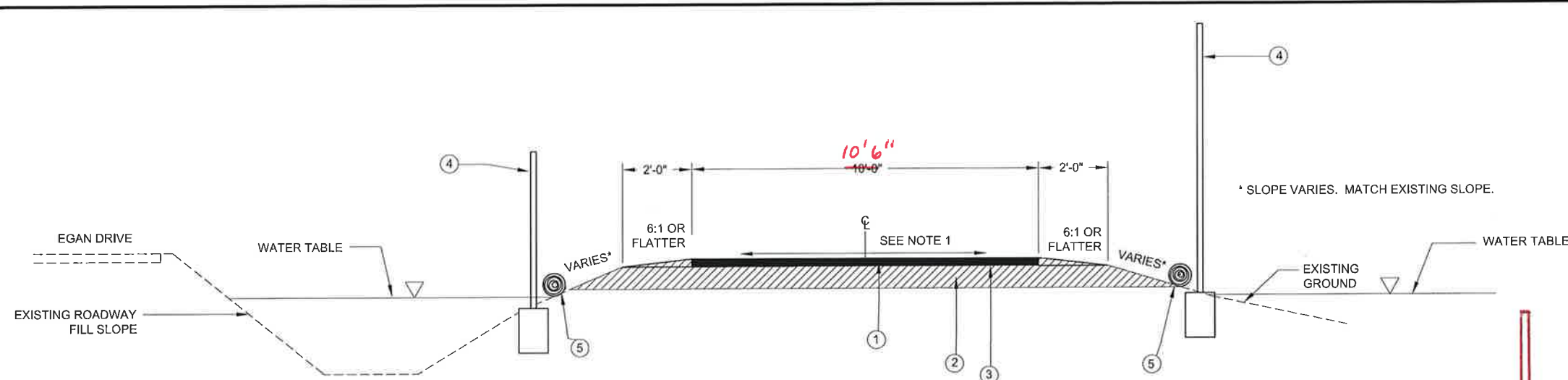
SURVEY CONTROL

PROJECT DESIGNATION
0932(052) / 68092

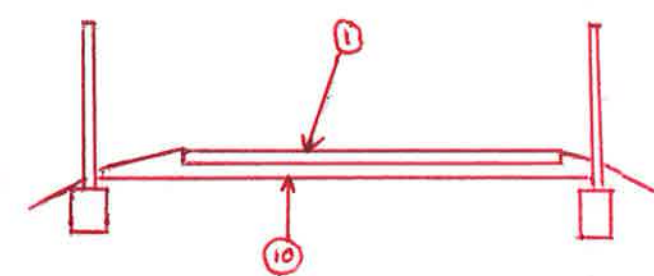
STATE	YEAR
ALASKA	2014
SHEET NUMBER	TOTAL SHEETS
A2	14



DO NOT SCALE FROM THESE DRAWINGS USE DIMENSIONS



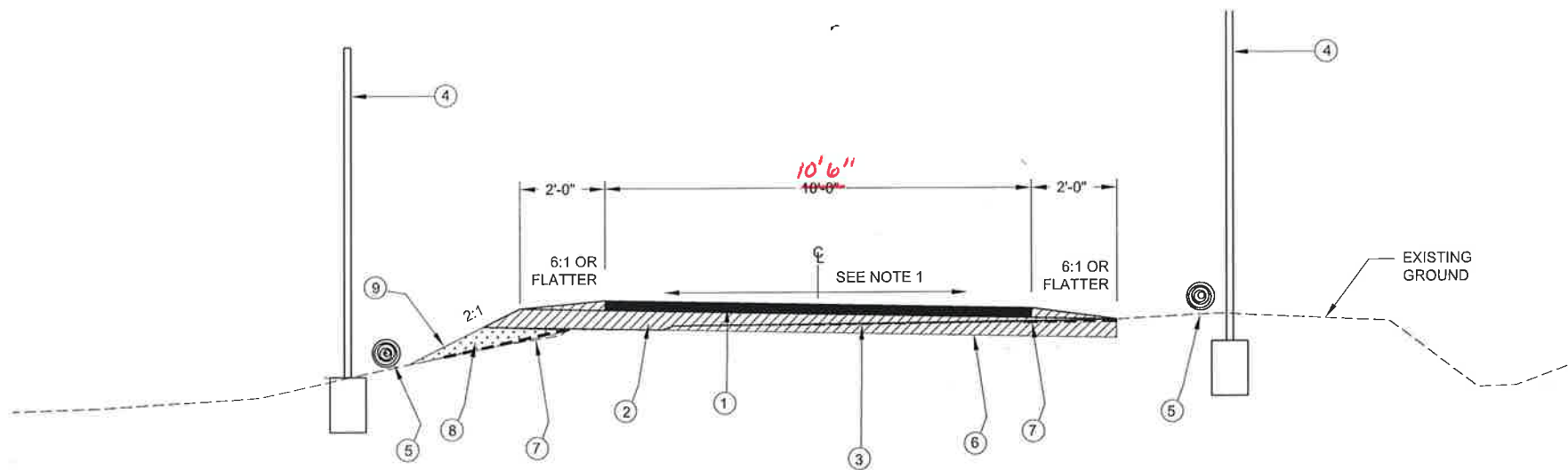
10'x10' PATCH OVER CULVERT REPLACEMENTS
TYPICAL SECTION ALIGNMENT "A"
 N.T.S.



TYPICAL SECTION, ASPHALT EXTENSION
ALIGNMENT "A"

GENERAL TYPICAL SECTION NOTES:

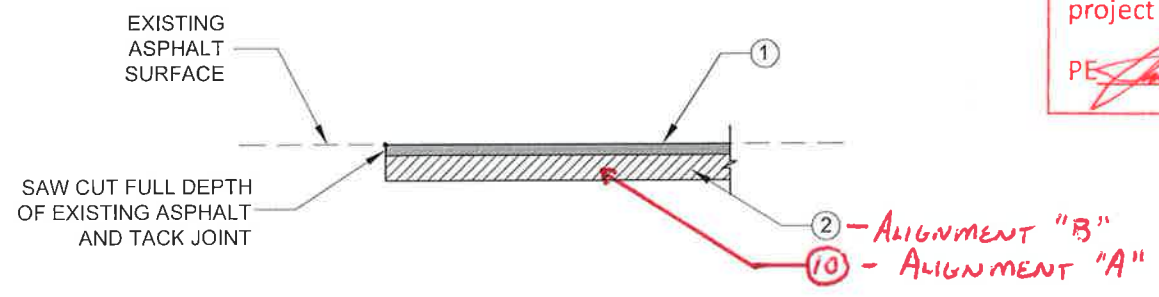
- CROSS SLOPE WILL BE 1.5% MAX, DIRECTION OF CROSS SLOPE WILL VARY BY LOCATION AS INDICATED IN THE PLANS OR AS DIRECTED.
- ON ALIGNMENT "B": CLEAR AND GRUB TO THE TOE OF NEW EMBANKMENT.



TYPICAL SECTION ALIGNMENT "B"
 N.T.S.

- MATERIAL LEGEND**
- ① 3" ASPHALT CONCRETE ~~TYPE III, CLASS B~~ **TYPE II, CLASS B**
 - ② 6" AGGREGATE BASE COURSE, GRADING D-1
 - ③ REMOVE EXISTING 1.5" ASPHALT PER SECTION 202
 - ④ EXISTING CHAIN LINK FENCE WITH CONCRETE BASE
 - ⑤ SEDIMENT BARRIER
 - ⑥ EXCAVATE EXISTING GROUND 9" BELOW FINISH GRADE
 - ⑦ CLEAR AND GRUB PRIOR TO CONSTRUCTING NEW EMBANKMENT
 - ⑧ SELECTED MATERIAL, TYPE A
 - ⑨ SEED AND BFM ERODIBLE SIDE SLOPES
 - ⑩ **EXISTING BED COURSE MATERIAL, SAND**

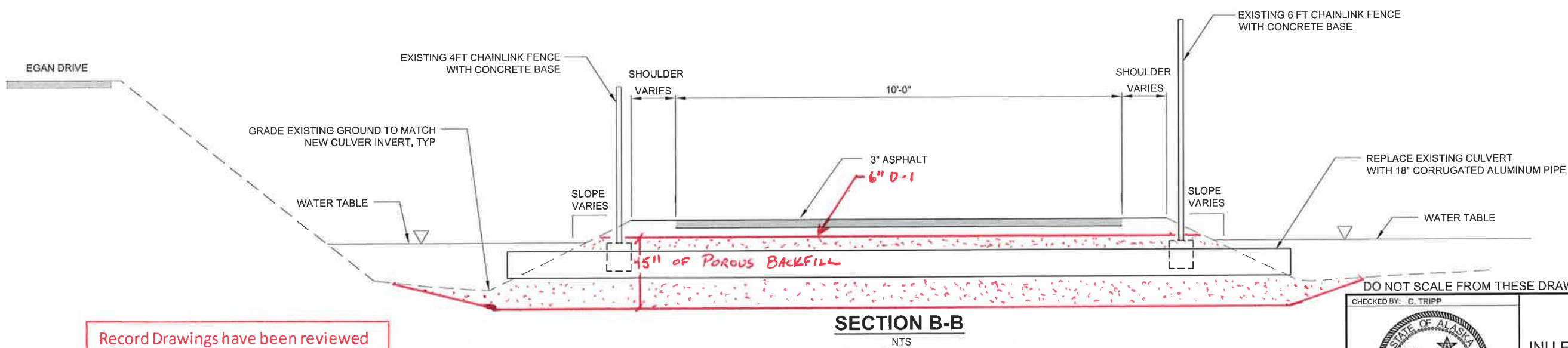
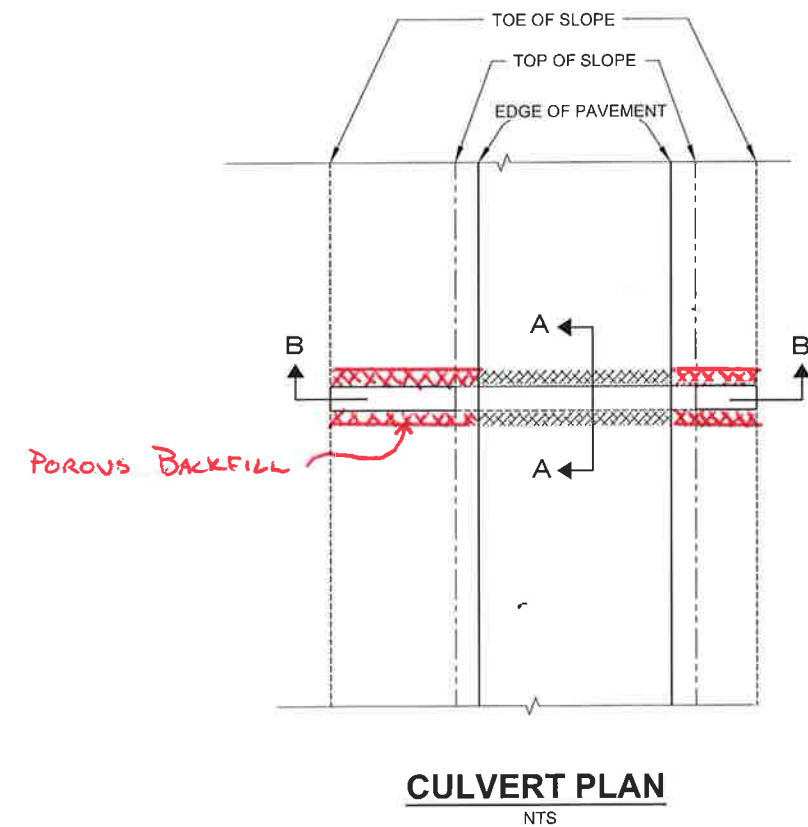
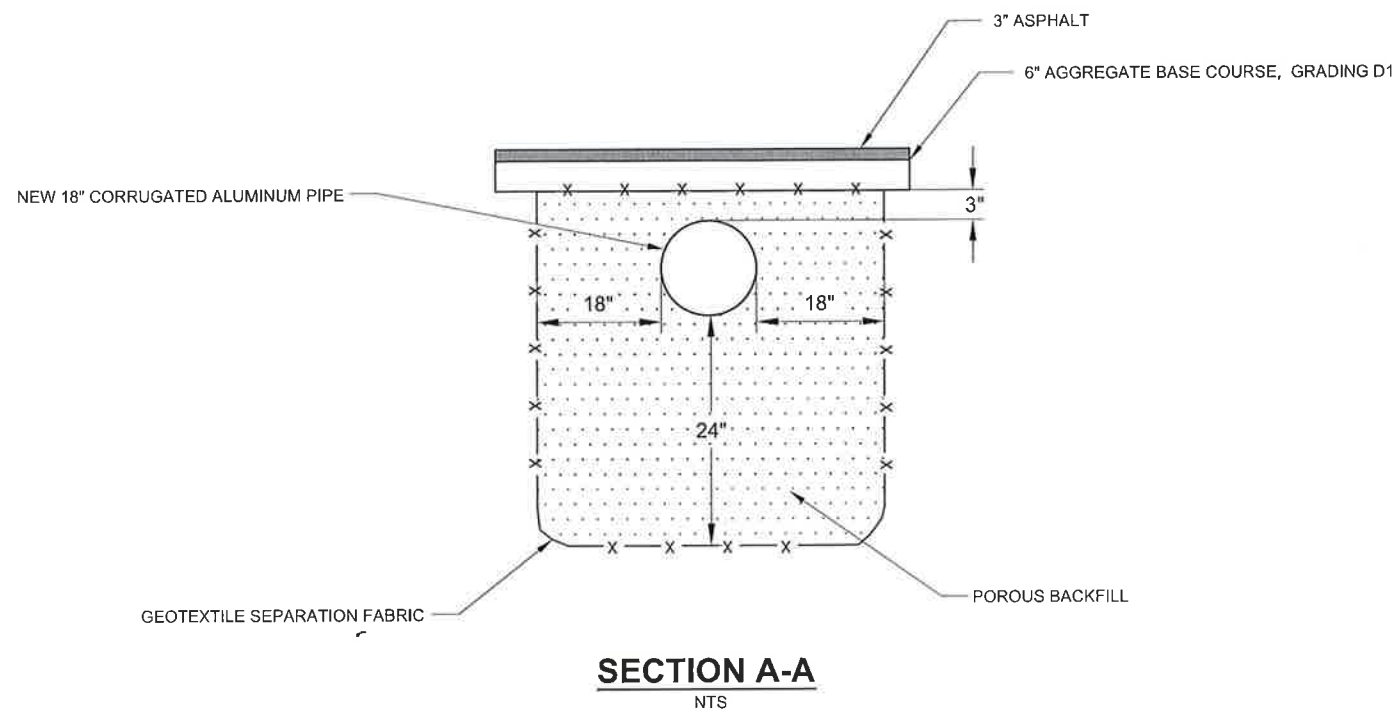
Record Drawings have been reviewed by the Project Engineer, and represent to the best of my knowledge, the project as constructed.
 PE *[Signature]* Date 12-AUG-15



PAVEMENT MATCH JOINT DETAIL
 N.T.S.

DO NOT SCALE FROM THESE DRAWINGS USE DIMENSIONS

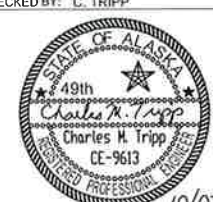
CHECKED BY: C. TRIPP 		STATE OF ALASKA DEPARTMENT OF TRANSPORTATION & PUBLIC FACILITIES SOUTHEAST REGION JNU EGAN DRIVE MULTI-USE PATH REPAIR AND BRIDGE #6011 REPLACEMENT Project No. 0932(052) / 68092	
DESIGNED BY: S. SCHLICHTING DRAWN BY: S. SCHLICHTING		TYPICAL SECTIONS	
PATH: Q:\JNU\68092\PLANS\T168092_B1-B2_TYPICAL.DWG TAB: B1 Monday, November 03, 2014 7:31:09 AM		SCHLICHTING, SARAH J (DOT)	
REVISIONS NO. DATE DESCRIPTION		PROJECT DESIGNATION 0932(052) / 68092	YEAR 2014
		SHEET NO. B1	TOTAL SHEETS 14



Record Drawings have been reviewed by the Project Engineer, and represent to the best of my knowledge, the project as constructed.

PE *[Signature]* Date 12-Aug-15

DO NOT SCALE FROM THESE DRAWINGS USE DIMENSIONS


CHECKED BY: C. TRIPP  10/07/14		STATE OF ALASKA DEPARTMENT OF TRANSPORTATION & PUBLIC FACILITIES SOUTHEAST REGION JNU EGAN DRIVE MULTI-USE PATH REPAIR AND BRIDGE #6011 REPLACEMENT Project No. 0932(052) / 68092 CULVERT TYPICAL SECTIONS			
DESIGNED BY: S. SCHLICHTING DRAWN BY: S. SCHLICHTING		PROJECT DESIGNATION: 0932(052) / 68092 YEAR: 2014 SHEET NO.: B2 TOTAL SHEETS: 14			
PATH: Q:\JNU\68092\PLANSET\68092_B1-B2_TYPICAL.DWG TAB: B2 Tuesday, October 07, 2014 11:10:01 AM SCHLICHTING, SARAH J (DOT)					
REVISIONS		PROJECT DESIGNATION	YEAR	SHEET NO.	TOTAL SHEETS
NO.	DATE	DESCRIPTION			

ESTIMATE OF QUANTITIES			
ITEM NO.	PAY ITEM	PAY UNIT	PLAN QUANTITY
201(8)	INVASIVE SPECIES SURVEY	LUMP SUM	ALL REQUIRED
201(9)	INVASIVE SPECIES CONTROL, REMOVAL, AND DISPOSAL	CONTINGENT SUM	ALL REQUIRED
202(2)	REMOVAL OF PAVEMENT	SQUARE YARD	104 334.9
202(4)	REMOVAL OF CULVERT PIPE	LINEAR FOOT	85
202(17)	REMOVAL OF EXISTING BRIDGE NO. 6011	LUMP SUM	ALL REQUIRED
203(6)	BORROW, SELECTED MATERIAL, TYPE A	TON	42 23.8
203(19)	UNCLASSIFIED EXCAVATION FOR ALIGNMENT "B"	LUMP SUM	ALL REQUIRED
205(1)	EXCAVATION FOR STRUCTURES	CUBIC YARD	400 56.6
205(3)	STRUCTURAL FILL	CUBIC YARD	50 52.6
301(1)	AGGREGATE BASE COURSE, GRADING D-1	TON	95 54.1
501(1)	CLASS A CONCRETE	LUMP SUM	ALL REQUIRED
503(1)	REINFORCING STEEL	LUMP SUM	ALL REQUIRED
504(3)	FURNISH AND ERECT PEDESTRIAN BRIDGE	LUMP SUM	ALL REQUIRED
505(9)	STRUCTURAL STEEL SHEET PILES - PZ27	SQUARE FOOT	1825 1851.2
603(9-18)	18 INCH CORRUGATED ALUMINUM PIPE	LINEAR FOOT	82 80
607(4)	RECONSTRUCTED FENCE	LINEAR FOOT	400 28
608(3)	ASPHALT SIDEWALK	SQUARE YARD	400 442.5
615(1)	STANDARD SIGN	SQUARE FOOT	13
618(1)	SEEDING	ACRE	0.04
619(3)	BONDED FIBER MATRIX (BFM)	POUND	460 300
630(1)	GEOTEXTILE, SEPARATION	SQUARE YARD	464 149
640(1)	MOBILIZATION AND DEMOBILIZATION	LUMP SUM	ALL REQUIRED
641(1)	EROSION, SEDIMENT AND POLLUTION CONTROL ADMINISTRATION	LUMP SUM	ALL REQUIRED
641(3)	TEMPORARY EROSION, SEDIMENT AND POLLUTION CONTROL	LUMP SUM	ALL REQUIRED
641(5)	TEMPORARY EROSION, SEDIMENT AND POLLUTION CONTROL BY DIRECTIVE	CONTINGENT SUM	ALL REQUIRED
641(6)	WITHHOLDING	CONTINGENT SUM	ALL REQUIRED
642(1)	CONSTRUCTION SURVEYING	LUMP SUM	ALL REQUIRED
643(2)	TRAFFIC MAINTENANCE	LUMP SUM	ALL REQUIRED
643(35)	SHUTTLE SERVICE	LUMP SUM	ALL REQUIRED
644(6)	VEHICLES	LUMP SUM	ALL REQUIRED

BASIS OF ESTIMATE		
ITEM NO.	DESCRIPTION	QUANTITY
203(6)	BORROW, SELECTED MATERIAL, TYPE A	1.81 TON/CY
203(19)	UNCLASSIFIED EXCAVATION FOR ALIGNMENT "B"	25 CY
301(1)	AGGREGATE BASE COURSE, GRADING D-1	1.95 TON/CY
603(9-18)	POROUS BACKFILL TO GO IN NEW CULVERT EXCAVATION	0.75 CY/LF
608(3)	ASPHALT SIDEWALK	117 LB/SY/IN
619(3)	BONDED FIBER MATRIX (BFM)	4000 LB/ACRE

Record Drawings have been reviewed by the Project Engineer, and represent to the best of my knowledge, the project as constructed.
PE *[Signature]* Date 12-AUG-15

DO NOT SCALE FROM THESE DRAWINGS USE DIMENSIONS

CHECKED BY: C. TRIPP  DESIGNED BY: S. SCHLICHTING DRAWN BY: S. SCHLICHTING PATH: Q:\JNU\68092\PLANSET\68092_C1_EST.DWG TAB: C1 Monday, November 03, 2014 8:28:49 AM 10/27/14	STATE OF ALASKA DEPARTMENT OF TRANSPORTATION & PUBLIC FACILITIES SOUTHEAST REGION JNU EGAN DRIVE MULTI-USE PATH REPAIR AND BRIDGE #6011 REPLACEMENT Project No. 0932(052) / 68092 ESTIMATE OF QUANTITIES
PROJECT DESIGNATION: 0932(052) / 68092 YEAR: 2014 SHEET NO.: C1 TOTAL SHEETS: 14	

202(2) REMOVAL OF PAVEMENT			
ALIGNMENT	BEGIN STA	END STA	SY
A	18" CPP AT 13+20	13+20	211
A	18" CPP AT 14+28	14+28	35
A	18" CPP AT 19+37	19+37	58
A	18" CPP AT 21+80	21+80	
B	16+36	17+05	77
B	18+01	18+40	43

603(9-18) CORRUGATED ALUMINUM PIPE SUMMARY									
PIPE #	LENGTH	INLET			OUTLET			SLOPE	REMARKS
		STATION	OFFSET (FT)	INV. ELEV	STATION	OFFEST (FT)	INV. ELEV		
P-1	19.8	13+22	9.5 RT	23.9	13+16	9.6 LT	23.9	0%	14 GAGE
P-2	17.8	14+28 14+26	10.1 RT	24.2	14+36 14+29	7.5 LT	24.2	0%	14 GAGE
P-3	23	19+29	12.7 RT	24.9	19+36	9.7 LT	24.9	0%	14 GAGE
P-4	22	21+72	10.7 RT	25.6	21+80	10.8 LT	25.6	0%	14 GAGE

202 (4) REMOVAL OF CULVERT PIPE		
ITEM	ESTIMATED QTY	UNIT
24" CSP STATION 13+22	20	LINEAR FEET
18" CSP STATION 14+29	20	LINEAR FEET
18" CSP STATION 19+29	23	LINEAR FEET
18" CSP STATION 21+72	22	LINEAR FEET


607(4) RECONSTRUCTED FENCE SUMMARY				
PIPE #	Station at Centerline	Left (ft)	Right (ft)	REMARKS
P-1	13+22	10	10	Remove and reconstruct fence to the limits of the culvert excavation.
P-2	14+29	10	10	Remove and reconstruct fence to the limits of the culvert excavation.
P-3	19+29	10	10	Remove and reconstruct fence to the limits of the culvert excavation.
P-4	21+72	10	10	Remove and reconstruct fence to the limits of the culvert excavation.
Align 'B'	16+82 to 17+02	20		Remove and dispose of fence and posts. Stations are approximate.
Align 'B'	17+05		8	REINSTALL EXISTING POST CLOSER TO BRIDGE

FENCE REMOVAL NOT REQ'D FOR CULVERT REMOVAL/INSTALL

615(1) STANDARD SIGN								
#	DESCRIPTION	OFFSET	ASDS CODE	WIDTH (IN)	HEIGHT (IN)	AREA (SQ FT)	POST SIZE	REMARKS
1	WEIGHT LIMIT 10 TONS	LT	R12-1	24	30	5	2.5	Locate 10-feet ahead of each bridge approach and 4- feet from the pavement edge.
2	WEIGHT LIMIT 10 TONS	RT	R12-1	24	30	5	2.5	Locate 10-feet ahead of each bridge approach and 4- feet from the pavement edge.
3	BIKE ROUTE	RT	D11-1	24	18	3	Existing	Replace the Bike Route Sign on existing sign post at 10+46 R on Alignment 'A'.

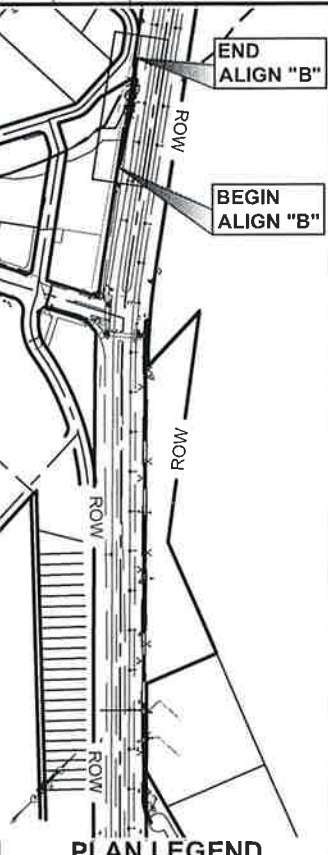
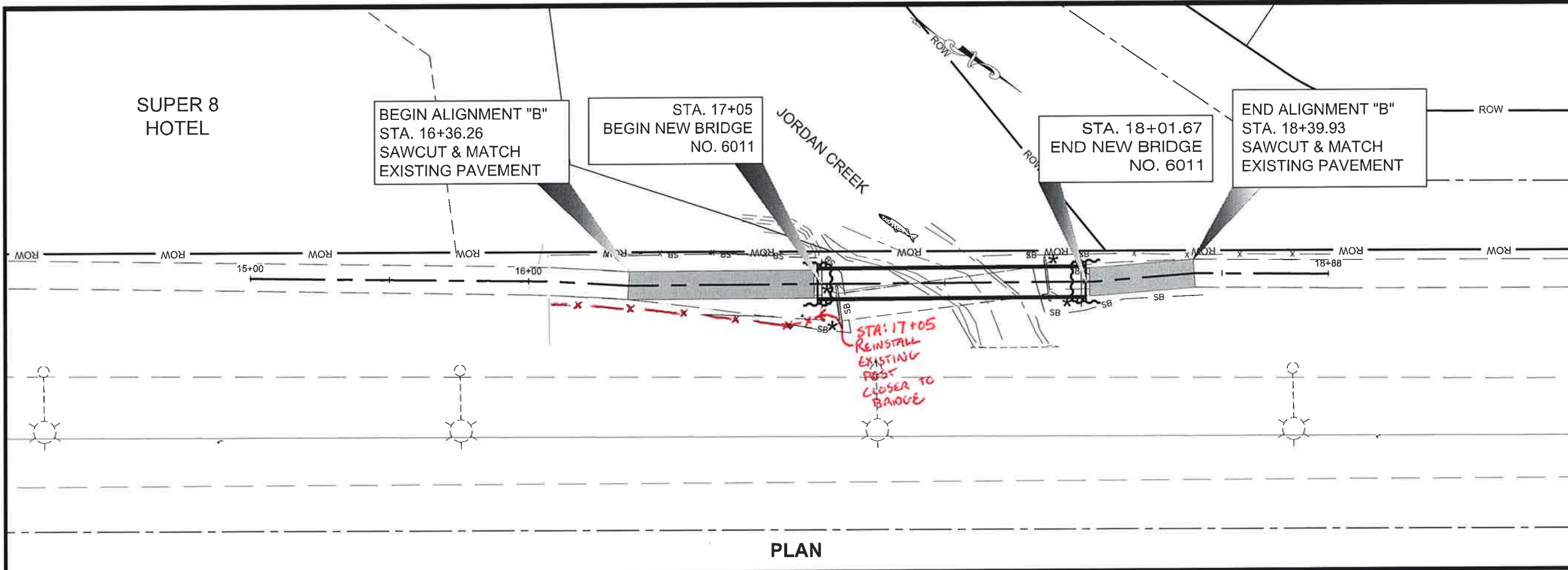
Record Drawings have been reviewed by the Project Engineer, and represent to the best of my knowledge, the project as constructed.
 PE *[Signature]* Date 12-AUG-15

DO NOT SCALE FROM THESE DRAWINGS USE DIMENSIONS

CHECKED BY: C. TRIPP	STATE OF ALASKA DEPARTMENT OF TRANSPORTATION & PUBLIC FACILITIES SOUTHEAST REGION					
	JNU EGAN DRIVE MULTI-USE PATH REPAIR AND BRIDGE #6011 REPLACEMENT Project No. 0932(052) / 68092					
DESIGNED BY: S. SCHLICHTING DRAWN BY: S. SCHLICHTING	SUMMARIES					
PATH: Q:\JNU\68092\PLANSET\68092_D1_SUMS.DWG TAB: D1 Wednesday, October 08, 2014 7:02:47 AM	SCHLICHTING, SARAH J (DOT)					
NO.	DATE	REVISIONS DESCRIPTION	PROJECT DESIGNATION	YEAR	SHEET NO.	TOTAL SHEETS
			0932(052) / 68092	2014	D1	14

SCHLICHTING, SARAH J (DOT)
 TAB: F2 Thursday, September 11, 2014 9:49:10 AM

ADDENDUM NUMBER		
ATTACHMENT NUMBER		
RECORD OF REVISIONS		
No.	DATE	DESCRIPTION

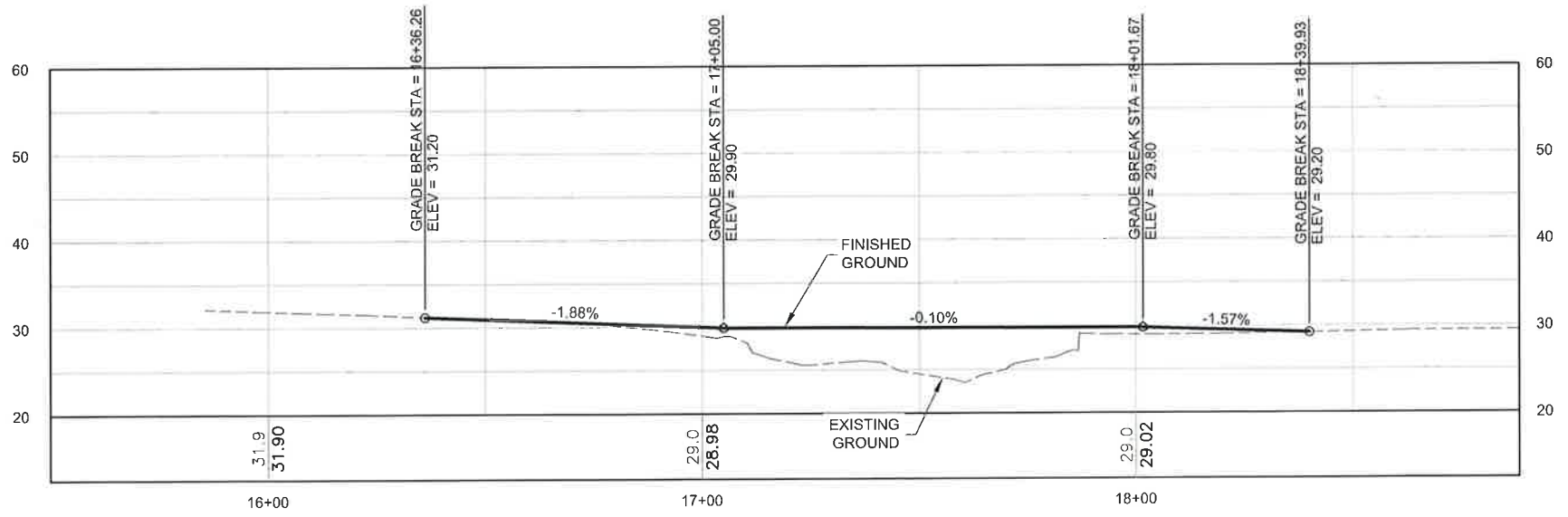


LEGEND

X	= FENCE LINE
SB	= SEDIMENT BARRIER
[Shaded Area]	= NEW PAVEMENT AT BRIDGE APPROACHES

Record Drawings have been reviewed by the Project Engineer, and represent to the best of my knowledge, the project as constructed.

PE *[Signature]* Date 12-AUG-15



NOTES:

- ★ REMOVE AND SALVAGE HANDRAILS FROM BOTH SIDES OF THE EXISTING BRIDGE APPROACHES. RE-INSTALL HANDRAIL AFTER NEW BRIDGE IS ERECTED.
- GEOTEXTILE SEPARATION FABRIC MUST BE PLACED BETWEEN THE EXISTING GROUND AND ANY FILL USED TO CONSTRUCT A TEMPORARY WORK PAD FOR EQUIPMENT.



DO NOT SCALE FROM THESE DRAWINGS USE DIMENSIONS

CHECKED BY: C. TRIPP

DESIGNED BY: S. SCHLICHTING
 DRAWN BY: S. SCHLICHTING

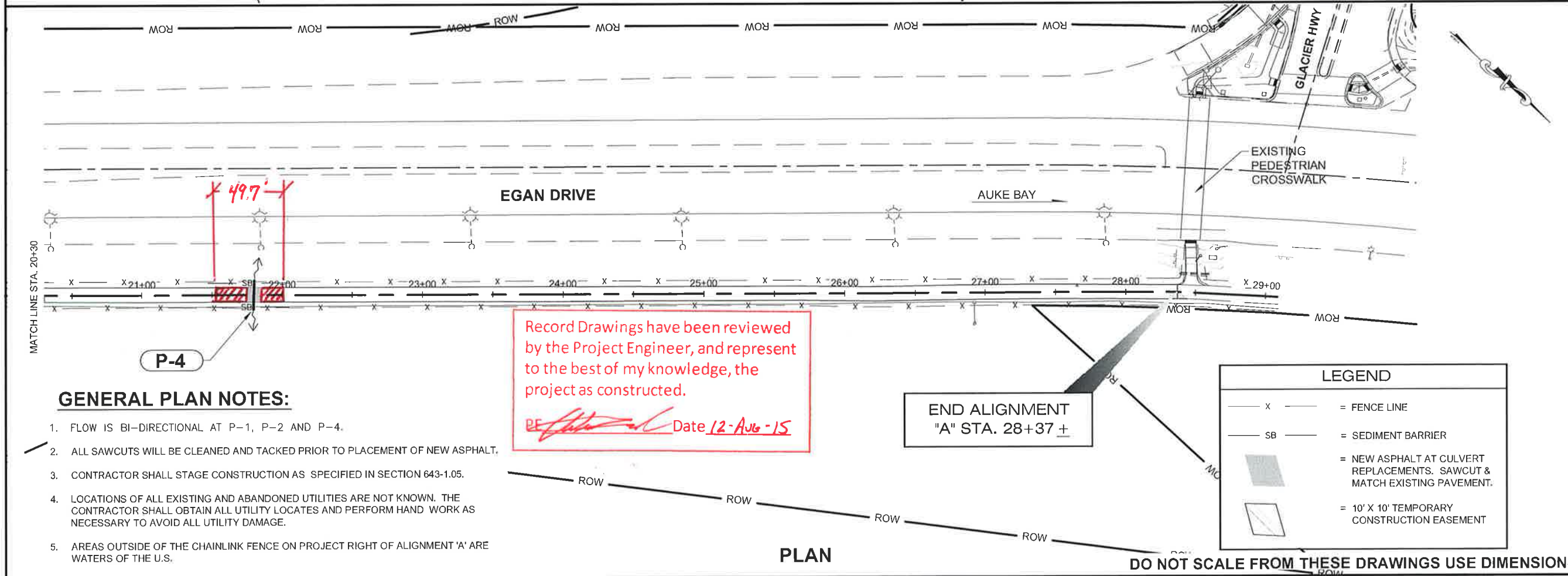
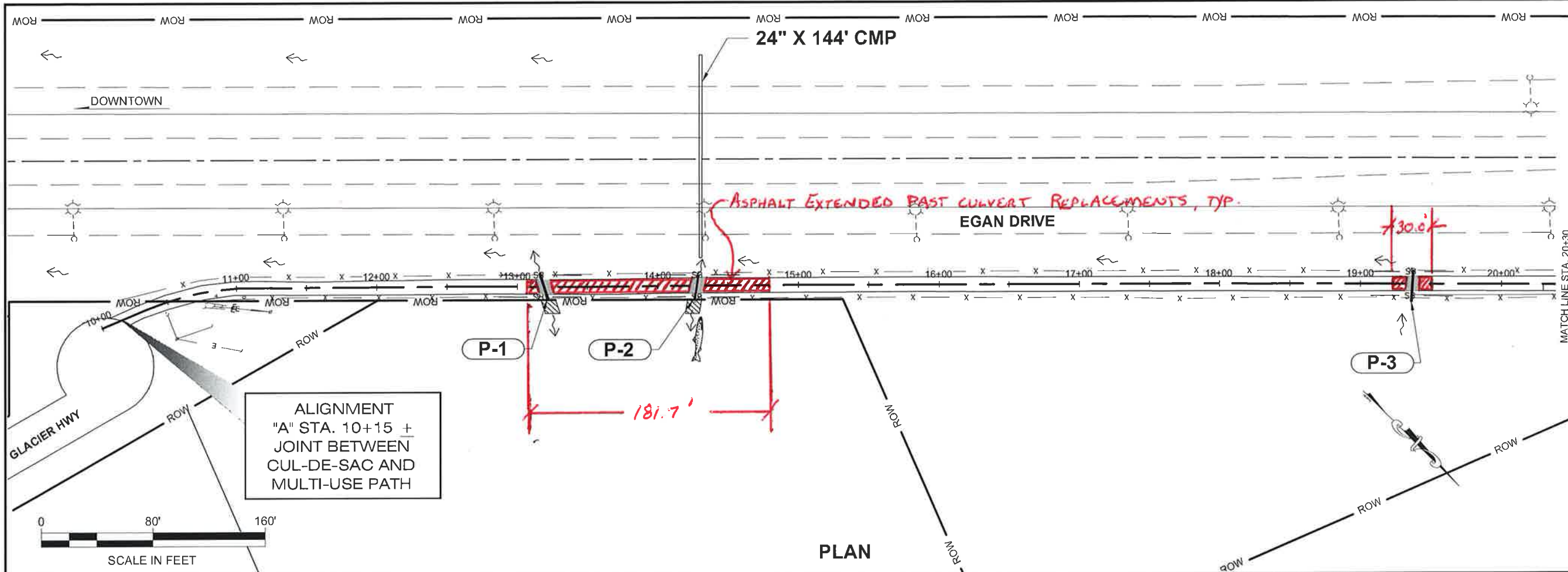
STATE OF ALASKA
 DEPARTMENT OF TRANSPORTATION & PUBLIC FACILITIES
 SOUTHEAST REGION

JNU EGAN DRIVE MULTI-USE
 PATH REPAIR AND BRIDGE
 #6011 REPLACEMENT
 Project No. 0932(052) / 68092

PLAN & PROFILE

PROJECT DESIGNATION	
0932(052) / 68092	
STATE	YEAR
ALASKA	2014
SHEET NUMBER	TOTAL SHEETS
F2	14

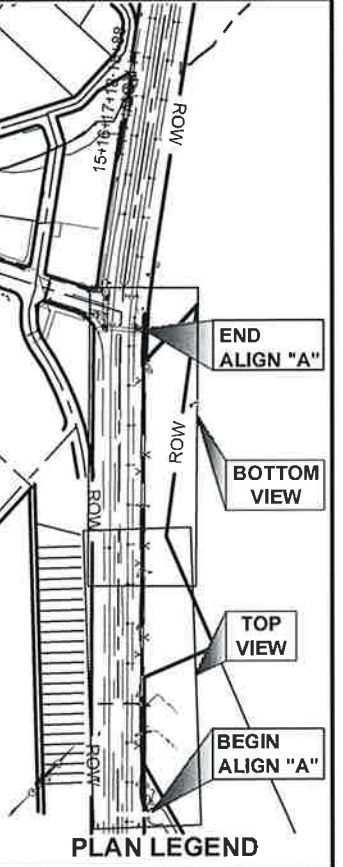
RECORD OF REVISIONS		
No	DATE	DESCRIPTION



GENERAL PLAN NOTES:

1. FLOW IS BI-DIRECTIONAL AT P-1, P-2 AND P-4.
2. ALL SAWCUTS WILL BE CLEANED AND TACKED PRIOR TO PLACEMENT OF NEW ASPHALT.
3. CONTRACTOR SHALL STAGE CONSTRUCTION AS SPECIFIED IN SECTION 643-1.05.
4. LOCATIONS OF ALL EXISTING AND ABANDONED UTILITIES ARE NOT KNOWN. THE CONTRACTOR SHALL OBTAIN ALL UTILITY LOCATES AND PERFORM HAND WORK AS NECESSARY TO AVOID ALL UTILITY DAMAGE.
5. AREAS OUTSIDE OF THE CHAINLINK FENCE ON PROJECT RIGHT OF ALIGNMENT 'A' ARE WATERS OF THE U.S.

LEGEND	
— x —	= FENCE LINE
— SB —	= SEDIMENT BARRIER
	= NEW ASPHALT AT CULVERT REPLACEMENTS. SAWCUT & MATCH EXISTING PAVEMENT.
	= 10' X 10' TEMPORARY CONSTRUCTION EASEMENT



CHECKED BY: C. TRIPP



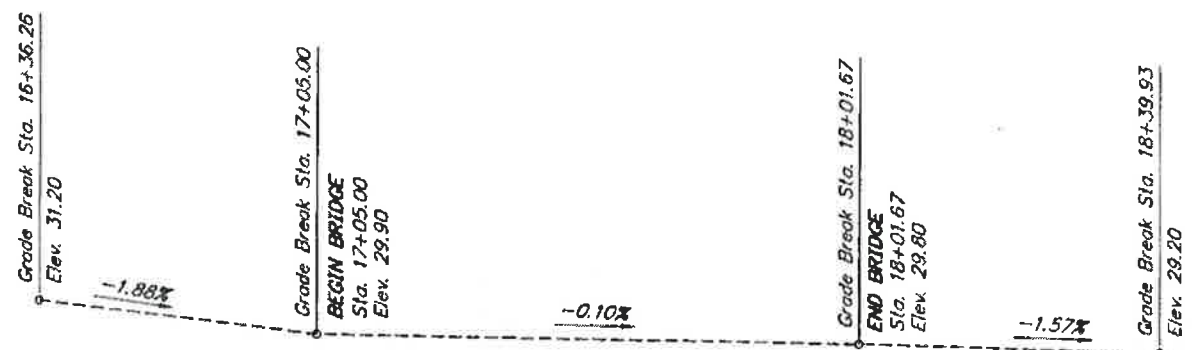
DESIGNED BY: S. SCHLICHTING
 DRAWN BY: S. SCHLICHTING

STATE OF ALASKA
 DEPARTMENT OF TRANSPORTATION & PUBLIC FACILITIES
 SOUTHEAST REGION
 JNU EGAN DRIVE MULTI-USE PATH REPAIR AND BRIDGE #6011 REPLACEMENT
 Project No. 0932(052) / 68092

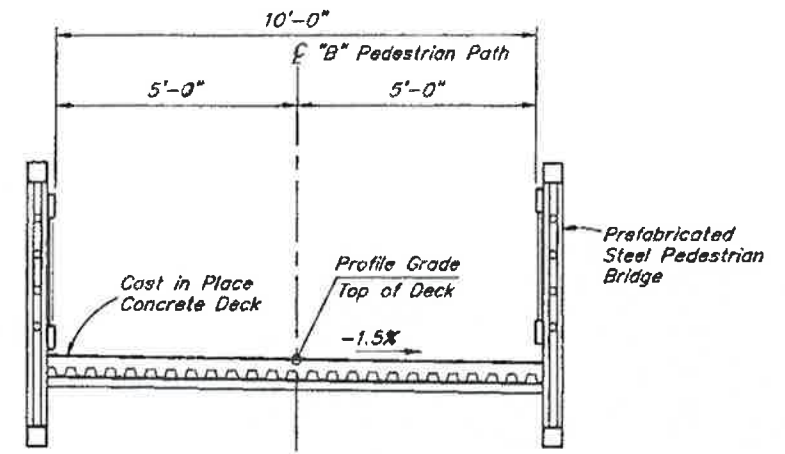
PLAN VIEW	
PROJECT DESIGNATION	
0932(052) / 68092	
STATE	YEAR
ALASKA	2014
SHEET NUMBER	TOTAL SHEETS
F1	14

DO NOT SCALE FROM THESE DRAWINGS USE DIMENSIONS

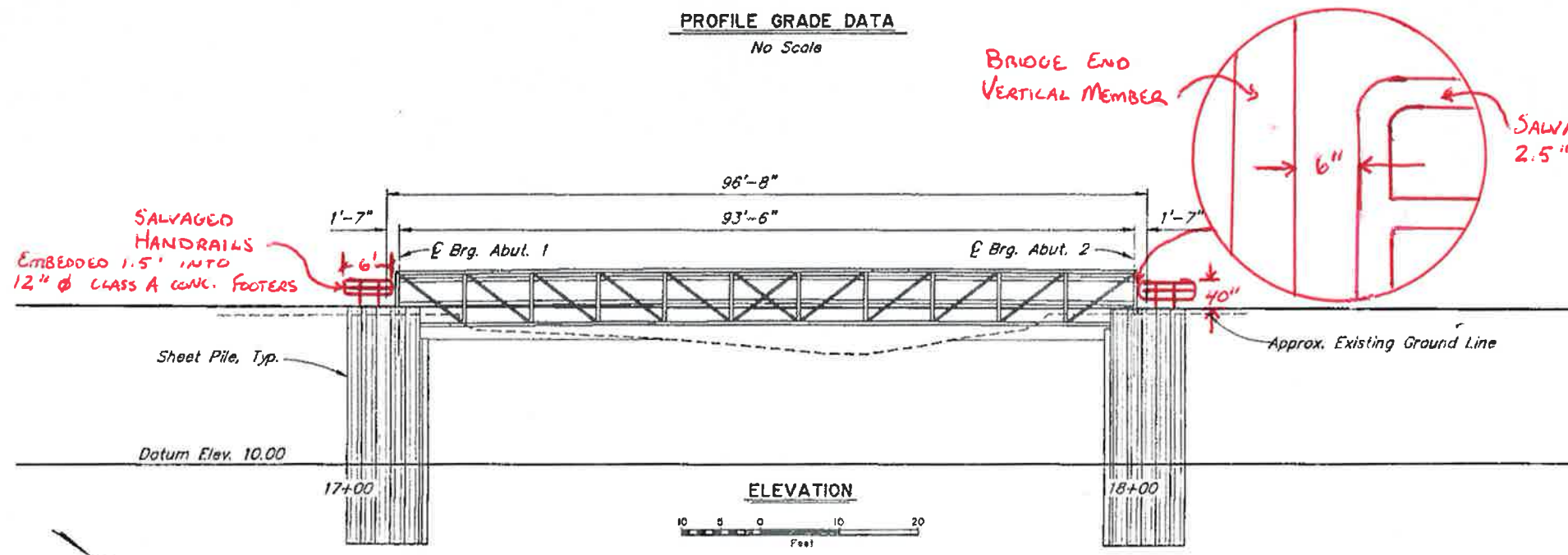
STATE	PROJECT DESIGNATION	YEAR	SHEET NO.	TOTAL SHEETS
ALASKA	0932(052) EGAN/68092	2014	N1	



PROFILE GRADE DATA
No Scale

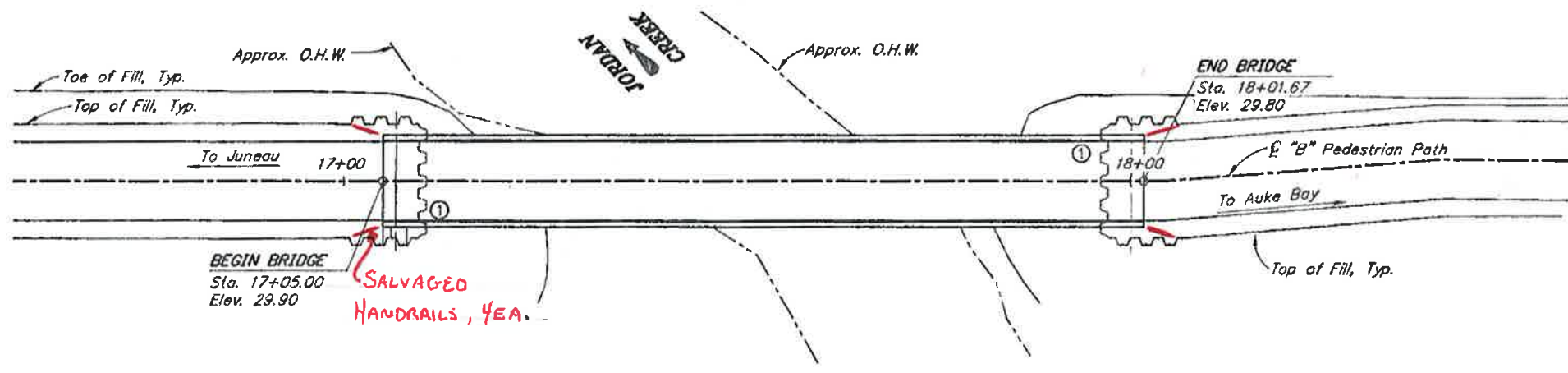


TYPICAL SECTION
12 6 0 1 2 3 4
Feet



ELEVATION
10 5 0 10 20
Feet

BRIDGE DRAWING INDEX	
TITLE	DWG. NO.
GENERAL LAYOUT	1
SITE PLAN	2
SHEET PILE LAYOUT	3
ABUTMENTS	4



PLAN
10 5 0 10 20
Feet

Record Drawings have been reviewed by the Project Engineer, and represent to the best of my knowledge, the project as constructed.
PE *[Signature]* Date 12-AUG-15

NOTES:
① Denotes location of Bridge No. Plate.

DESIGNED BY: <i>[Signature]</i>	CHECKED BY: <i>[Signature]</i>	LAYOUT BY: <i>[Signature]</i>	CHECKED BY: <i>[Signature]</i>
DRAWN BY: <i>[Signature]</i>	CHECKED BY: <i>[Signature]</i>	SPECIFICATIONS BY: <i>[Signature]</i>	P S & E COMPARED: <i>[Signature]</i>
QUANTITIES BY: <i>[Signature]</i>	CHECKED BY: <i>[Signature]</i>	APPROVAL RECOMMENDED BY: <i>[Signature]</i>	FOR R.A.P.

STATE OF ALASKA
DEPARTMENT OF TRANSPORTATION
AND PUBLIC FACILITIES
BRIDGE SECTION



JORDAN CREEK PEDESTRIAN BRIDGE
EGAN DRIVE
GENERAL LAYOUT

BRIDGE NO. 6011
DWG. NO. 1

GENERAL NOTES

DESIGN:..... AASHTO LRFD Bridge Design Specifications, 2012 Edition, with latest interim specifications.
AASHTO LRFD Guide Specifications for Design of Pedestrian Bridges, 2009.

LIVE LOAD:..... 90 psf pedestrian or H10 service vehicle whichever produces maximum effect.

DEAD LOAD:..... Includes 75 psf for all wearing surfacing.

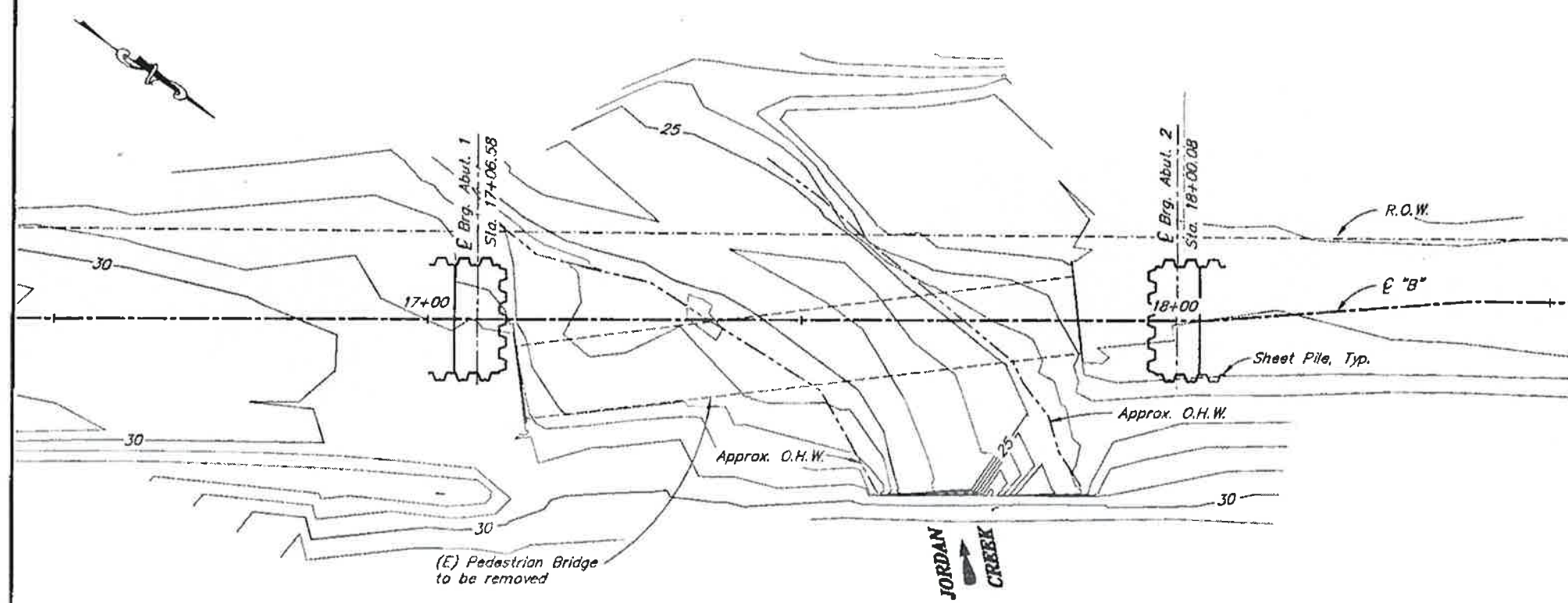
SEISMIC PARAMETERS:..... PGA = 0.17
S_s = 0.39
S_i = 0.21
Site Class = E
Liquefaction Potential = High
AASHTO 7% probability of exceedance in 75 years.

REINFORCEMENT:..... ASTM A706, Grade 60, F_y = 60,000 psi
Space reinforcement evenly unless otherwise noted.

CONCRETE:..... Class A Concrete, f'c = 4000 psi.

STRUCTURAL STEEL:..... ASTM A709, Grade 36T3, F_y = 36,000 psi
Galvanize all structural steel in accordance with AASHTO M111 unless shown otherwise.

STRUCTURAL STEEL SHEET PILE:..... ASTM A709, Grade 50T3, F_y = 50,000 psi.
Galvanize all structural steel in accordance with AASHTO M111



LOCATION	STRENGTH I FACTORED LOAD (KSF)	NOMINAL BEARING RESISTANCE (KSF)	BEARING RESISTANCE FACTOR, φ
Abutment 1	3.60	8 *	0.50
Abutment 2	3.60	8 *	0.50

* Presumptive value based on AASHTO LRFD TC10.6.2.6.1-1



ITEM NO.	ITEM	PAY UNIT	EST UNIT	SUBST.	SUPERST.	TOTAL
202(17)	Removal of Existing Bridge No. 6011	LS	SF	All Req'd	All Req'd	All Req'd
205(3)	Structural Fill	CY	CY	50	---	50
501(1)	Class A Concrete	LS	CY	21.3	---	21.3
503(1)	Reinforcing Steel	LS	LBS	1842	---	1842
504(3)	Furnish and Erect Pedestrian Bridge	LS	LS	---	1	1
505(9)	Structural Steel Sheet Piles	SF	SF	1825	---	1825

Item numbers are for reference only. Quantities shown are not necessarily the pay quantities nor the total quantity of the particular item.

ABBREVIATIONS:

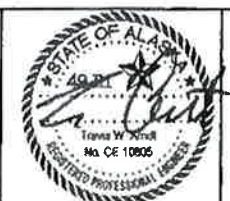
- E = centerline
- ⊥ = plate
- & = and
- @ = at
- ∅ = diameter
- ± = approximate
- Abut. = abutment
- Approx. = approximate
- b.f. = back/dirt face
- bat. = bottom
- Br. = bridge
- btwn. = between
- Brg. = Bearings
- C.I.P. = cast in place
- Clr. = clear, clearance
- CY = cubic yard
- dia. = diameter
- Dwg. = drawing
- E = expansion
- (E) = existing
- EA = each
- Elev. = elevation
- e.f. = each face
- e.w. = each way
- F = fixed
- f.f. = front/air face
- Hwy. = highway
- ksf = 1000 pounds per square foot
- LB = pound
- LF = linear foot
- LS = lump sum
- Lt. = left
- max. = maximum
- min. = minimum
- n.f. = near face
- No. = number
- o.c. = on center
- O.H.W. = ordinary high water
- psf = pounds per square foot
- psi = pounds per square inch
- PVC = point of vertical curve
- PVI = point of vertical intersection
- PVT = point of vertical tangent
- R.O.W. = right of way
- Rt. = right
- Rd. = road
- spc. = space, spaces
- Sta. = station
- SF = square feet
- Symm. = symmetric
- Typ. = typical
- w/ = with

Record Drawings have been reviewed by the Project Engineer, and represent to the best of my knowledge, the project as constructed.

PE *[Signature]* Date 12-Aug-15

DESIGNED BY: <i>[Signature]</i>	CHECKED: <i>[Signature]</i>	HYDRAULICS BY:	CHECKED BY:
DRAWN BY: <i>[Signature]</i>	CHECKED: <i>[Signature]</i>	FOUNDATIONS REVIEWED BY:	
QUANTITIES BY: <i>[Signature]</i>	CHECKED: <i>[Signature]</i>		

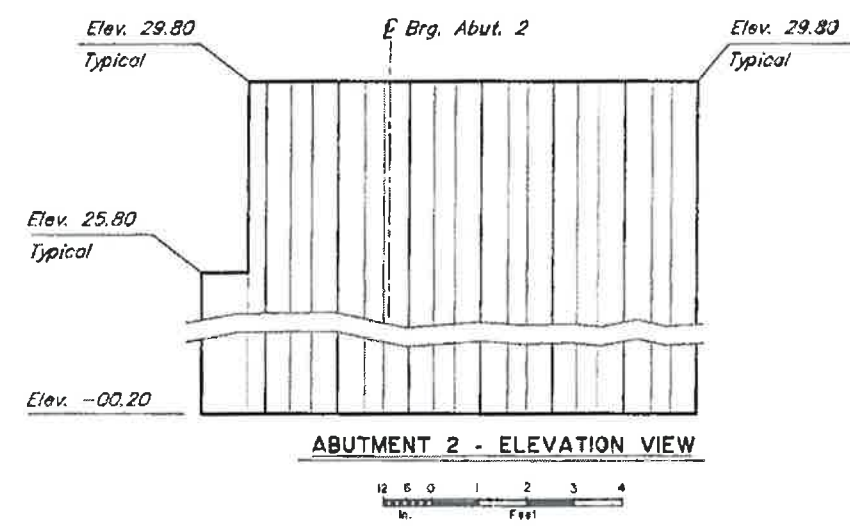
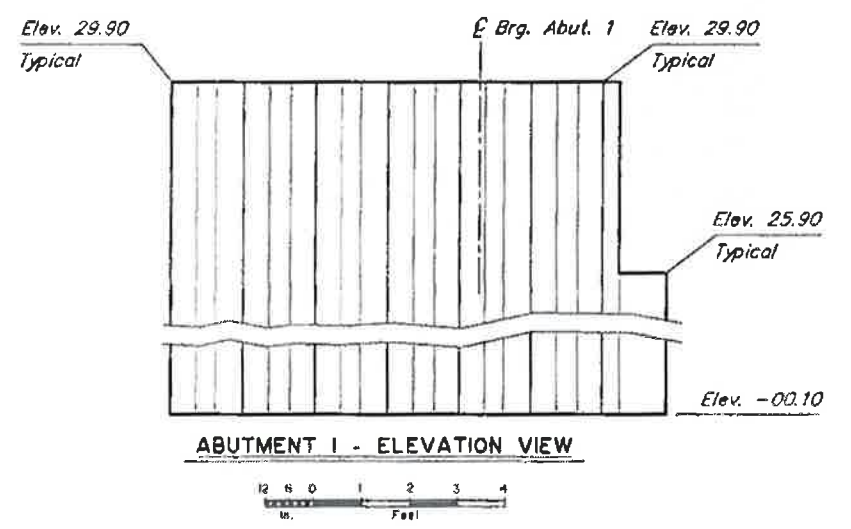
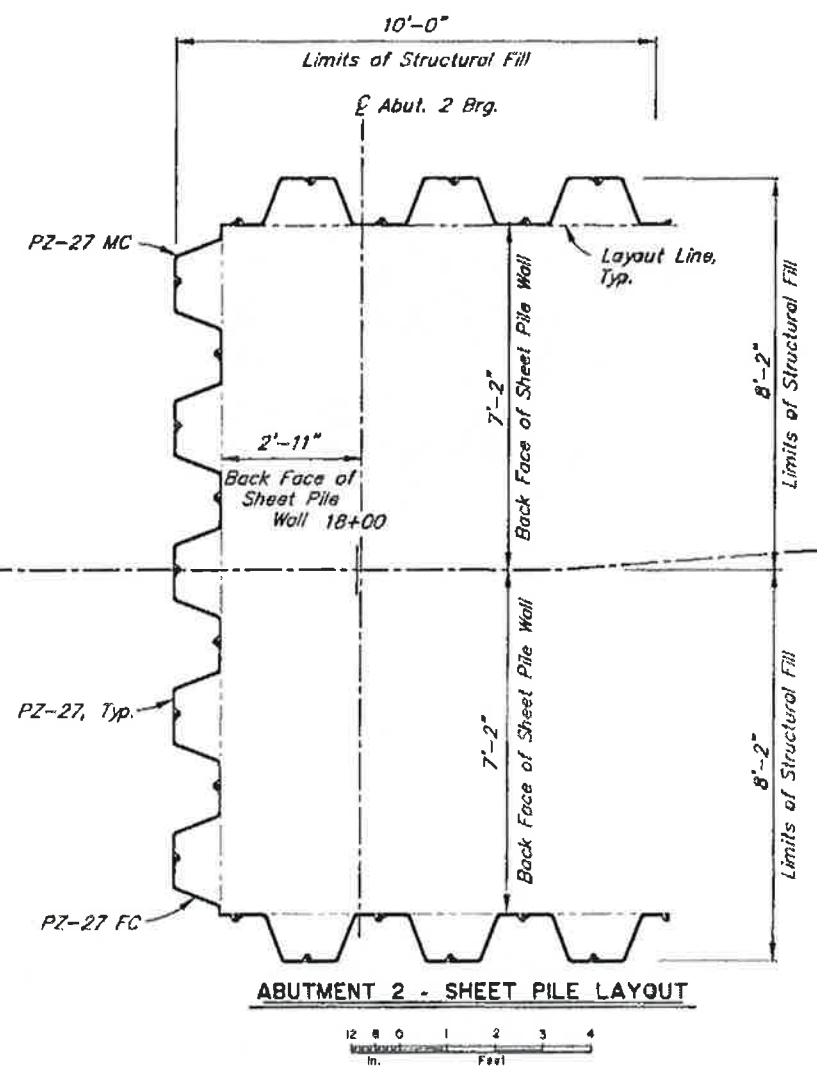
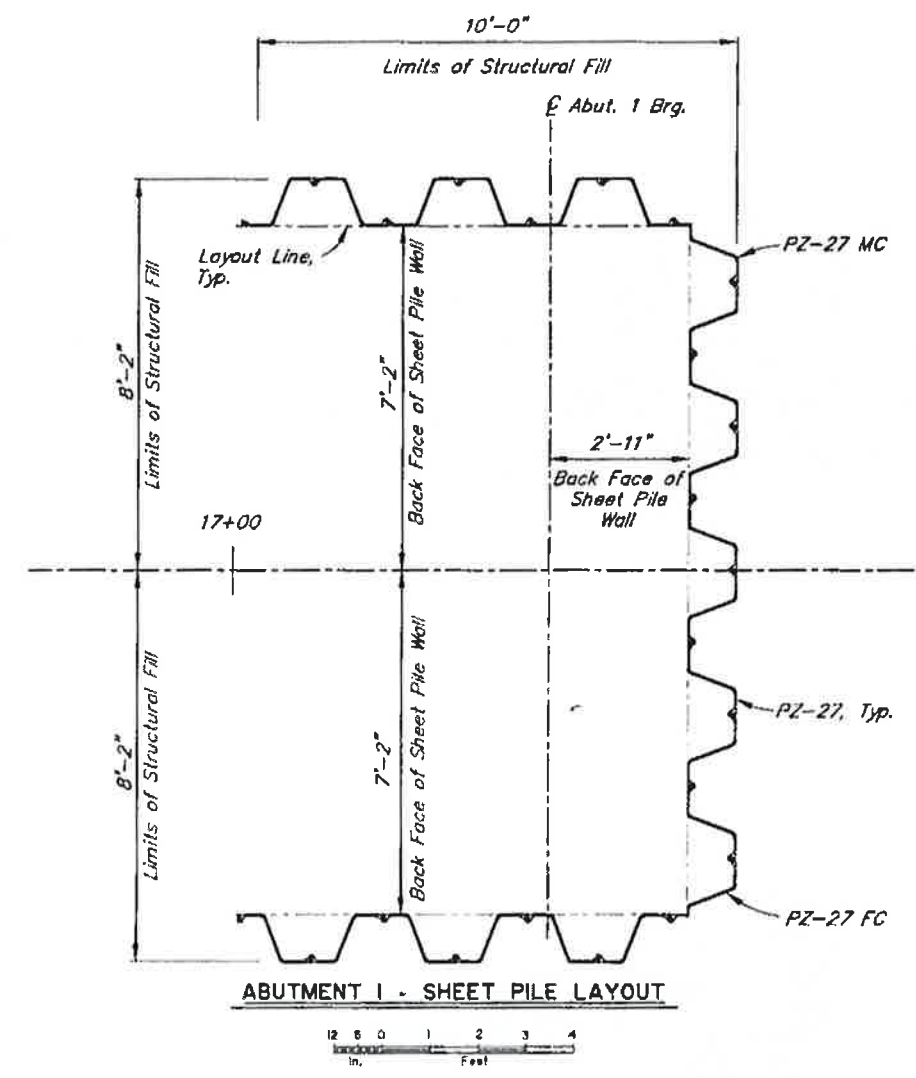
STATE OF ALASKA
DEPARTMENT OF TRANSPORTATION
AND PUBLIC FACILITIES
BRIDGE SECTION



JORDAN CREEK PEDESTRIAN BRIDGE
EGAN DRIVE
SITE PLAN

BRIDGE NO. 6011
DWG. NO. 2

STATE	PROJECT DESIGNATION	YEAR	SHEET NO.	TOTAL SHEETS
ALASKA	0932(052) EGAN/68092	2014	N3	




Record Drawings have been reviewed by the Project Engineer, and represent to the best of my knowledge, the project as constructed.
 PE: *[Signature]* Date 12-AUG-15

DESIGNED BY: <i>[Signature]</i>	CHECKED: <i>[Signature]</i>
DRAWN BY: <i>[Signature]</i>	CHECKED: <i>[Signature]</i>
QUANTITIES BY: <i>[Signature]</i>	CHECKED: <i>[Signature]</i>

STATE OF ALASKA
 DEPARTMENT OF TRANSPORTATION
 AND PUBLIC FACILITIES
 BRIDGE SECTION

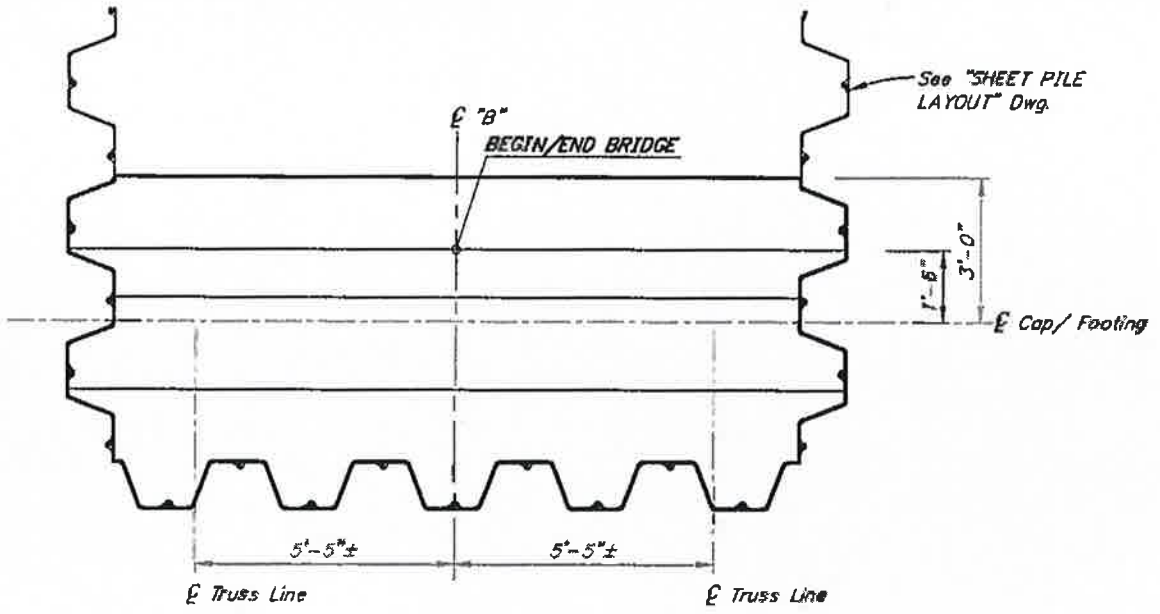


JORDAN CREEK PEDESTRIAN BRIDGE
 EGAN DRIVE
 SHEET PILE LAYOUT

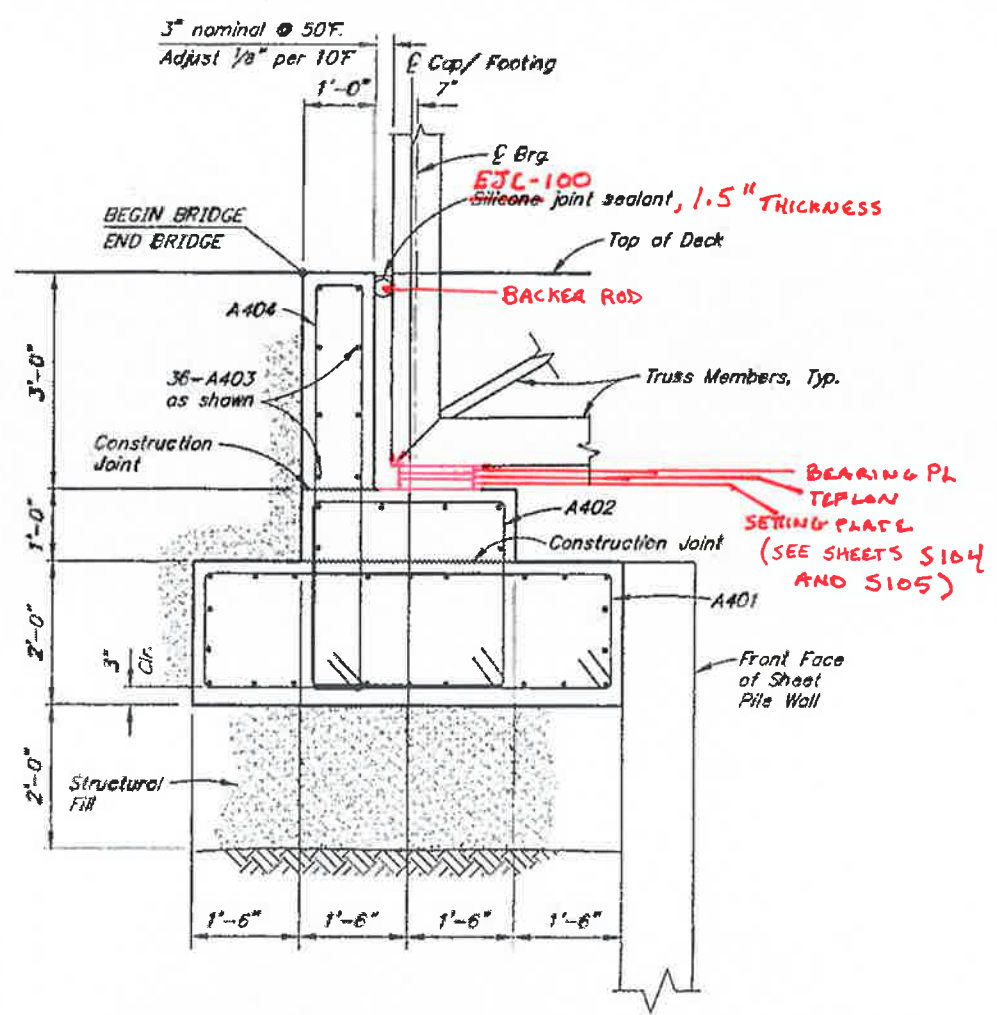

 BRIDGE NO. 6011
 DWG. NO. 3

STATE	PROJECT DESIGNATION	YEAR	SHEET NO.	TOTAL SHEETS
ALASKA	0932(052) EGAN/88092	2014	N4	

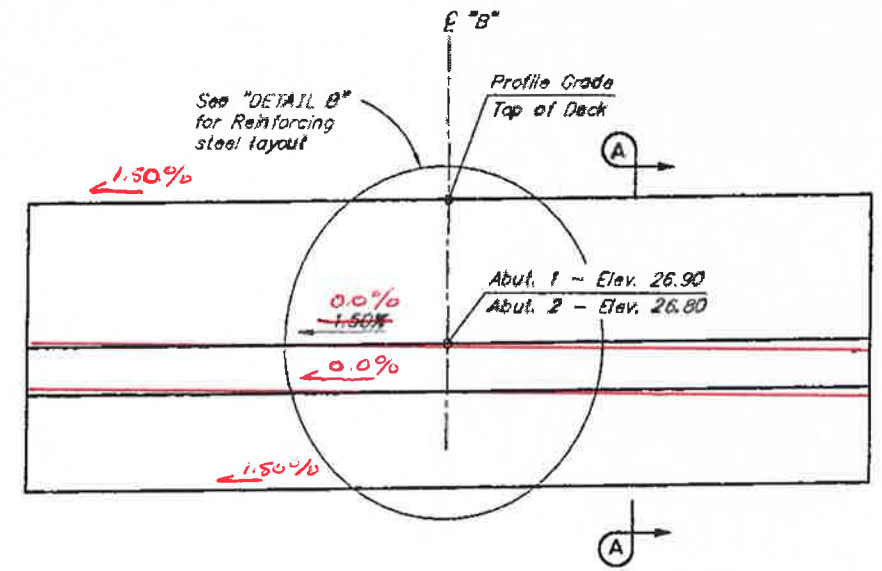
REINFORCING STEEL - ONE ABUTMENT						
MARK	NOTE	SIZE	NO.	LENGTH	TYPE	BENDING DIAGRAM
A401		4	22	15'-3"	STIRRUP	
A402		4	22	11'-3"	STIRRUP	
A403		4	36	14'-0"	---	
A404		4	22	13'-3"	STIRRUP	



PLAN
(Abutment 1 shown, Abutment 2 Similar)



SECTION A-A



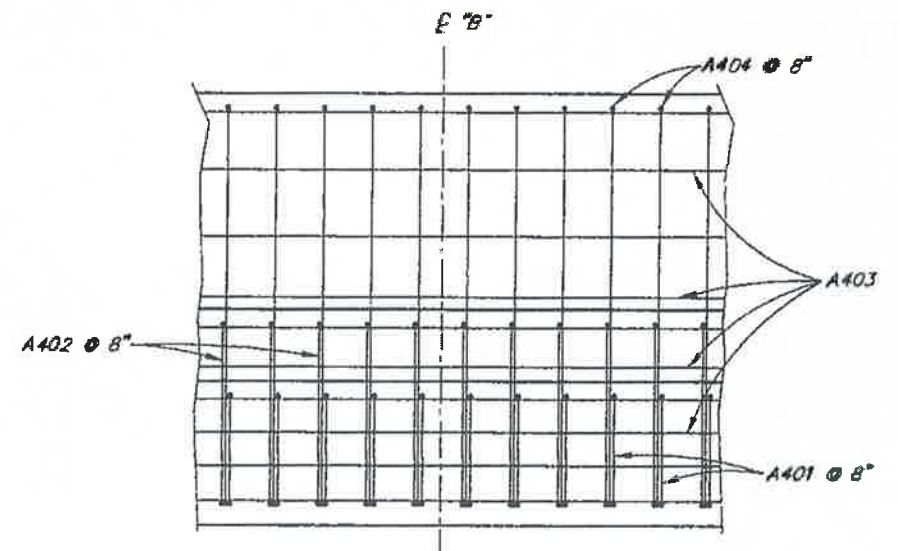
ELEVATION

(Looking Back on Station)
(Abutment 1 shown, Abutment 2 Similar)



Record Drawings have been reviewed by the Project Engineer, and represent to the best of my knowledge, the project as constructed.

PE *[Signature]* Date 12-AUG-15



DETAIL B



DESIGNED BY: <i>[Signature]</i>	CHECKED: <i>[Signature]</i>
DRAWN BY: <i>[Signature]</i>	CHECKED: <i>[Signature]</i>
QUANTITIES BY: <i>[Signature]</i>	CHECKED: <i>[Signature]</i>

STATE OF ALASKA
DEPARTMENT OF TRANSPORTATION
AND PUBLIC FACILITIES
BRIDGE SECTION



JORDAN CREEK PEDESTRIAN BRIDGE
EGAN DRIVE
ABUTMENTS

BRIDGE NO. 6011
DWG. NO. 4

6/2/2015 2:44 PM

JORDAN CREEK PEDESTRIAN BRIDGE

JUNEAU, AK

TRUCANO CONSTRUCTION

DRAWING INDEX

SHEET NO.	DESCRIPTION	REV AB
T001	TITLE PAGE	06/02/2015
T002	GENERAL NOTES	06/02/2015
T003	BEARING REACTION & ANCHOR BOLT LAYOUT	06/02/2015
S101	ELEVATION & PLAN VIEW	06/02/2015
S102	WELD DETAILS	06/02/2015
S103	CROSS SECTION	06/02/2015
S104	BEARING ELEVATIONS	06/02/2015
S105	BEARING DETAILS	06/02/2015
S106	SPLICE DETAILS	06/02/2015
S107	GALVANIZING DETAILS	06/02/2015

Record Drawings have been reviewed by the Project Engineer, and represent to the best of my knowledge, the project as constructed.
 PE *[Signature]* Date 12-AUG-15

K:\2014\BR\BR14-01750\BR14-01750-P.dwg

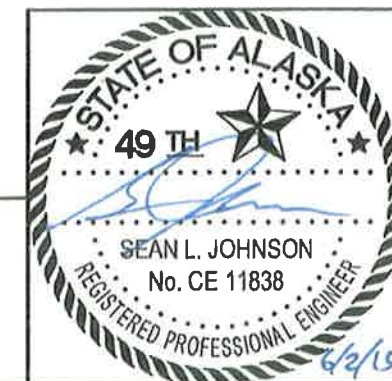
REV	STATUS	BY	DATE
AB	FINAL AS BUILT DRAWINGS	RH	06/02/2015

PROPRIETARY AND CONFIDENTIAL
 THIS DRAWING IS THE SOLE PROPERTY OF BIG R MANUFACTURING, LLC. AND CONTAINS PROPRIETARY INFORMATION FOR USE WITH THIS PROJECT ONLY. ANY REPRODUCTION IN PART OR AS A WHOLE WITHOUT WRITTEN PERMISSION IS STRICTLY PROHIBITED.



P.O. Box 1290 • Greeley, Colorado 80632-1290
 (970) 356-9600 • Fax:(970) 356-9621 • www.bigrbridge.com

94'-2" x 10'-4"
JORDAN CREEK PEDESTRIAN BRIDGE
 JUNEAU, AK
 TRUCANO CONSTRUCTION



BR14-01750
DESIGN BY ENL
DRAWN BY RDH
CHECKED BY ENL
SHEET NO. T001 OF T003

GENERAL NOTES

- 1) BIG R BRIDGE IS AISC QUALITY CERTIFIED BRIDGE FABRICATION -- INTERMEDIATE (MAJOR) WITH A FRACTURE CRITICAL AND SOPHISTICATED PAINT ENDORSEMENT, AND CWB CERTIFIED TO CSA STANDARD W47.1 DIVISION 2.
- 2) DESIGN IS IN ACCORDANCE WITH THE "LRFD GUIDE SPECIFICATION FOR DESIGN OF PEDESTRIAN BRIDGES" BY AASHTO, DECEMBER 2009.
- 3) MATERIALS (UNLESS NOTED OTHERWISE):

a) HSS SECTIONS:	ASTM A500 GRADE C	Fy = 50 ksi MIN.
b) STEEL SHAPES:	ASTM A992 OR A588	Fy = 50 ksi
c) STEEL PLATES:	ASTM A572 GRADE 50	Fy = 50 ksi
d) ANCHOR BOLTS:	ASTM F1554 GRADE 55	Fy = 55 ksi (GALV)
e) STRUCTURAL BOLTS:	ASTM A325 TYPE 1 (GALV)	
f) TEFLON PTFE/SHIM PLATE:	ASTM D4745	
- 4) DESIGN LOADINGS:
 - a) BRIDGE DEAD LOAD
 - b) UNIFORM PEDESTRIAN LIVE LOAD OF 90 PSF.
 - c) VEHICLE LIVE LOAD OF H10 LB TRUCK.
 - d) WIND LOAD FROM 90 MPH WIND AT A MAX HEIGHT OF 32.8' ABOVE GRADE.
- 5) BRIDGE TO BE BUILT TO THE REQUIREMENTS OF AWS D1.1
- 6) ALL SHOP WELDING SHALL USE THE GAS METAL ARC WELDING OR FLUX CORED ARC WELDING PROCESS.
- 7) FINISH:
 - a) ALL STEEL SHALL BE HOT DIPPED GALVANIZED TO ASTM A123 OR A153.
 - b) HOT DIP GALVANIZED FINISH SURFACE AND GALVANIZING REPAIR PAINT TO CONFORM TO ASTM A780. HIGH-ZINC-DUST-CONTENT PAINT FOR GALVANIZED WELDS AND REPAIR PAINTING GALVANIZED STEEL, WITH DRY FILM COATING NOT LESS THAN 90 PERCENT ZINC DUST BY WEIGHT. COLOR AND GLOSS TO MATCH APPEARANCE OF NEW HOT DIP GALVANIZING.

IF BOLTS DO NOT SMOOTHLY ENGAGE UP TO SNUG-TIGHT, THERE MAY BE AN OBSTRUCTION WITHIN THE THREADS. THE BOLT SHOULD BE REMOVED, THE THREADS ON THE BOLT AND NUT CLEANED AND RE-TAPPED IF NECESSARY TO ALLOW SMOOTH INSTALLATION OF THE BOLT.
- 8) ALL BOLTS AND NUTS SHALL BE FURNISHED IN THE AMOUNT OF 5% IN EXCESS OF THE NUMBER REQUIRED FOR EACH SIZE AND LENGTH.
- 9) MAINTENANCE NOTE: DO NOT APPLY DE-ICING OR DUST PROHIBITIVE CHEMICALS OR SALTS TO ANY PART OF THE BRIDGE STRUCTURE.
- 10) SHOP SPLICES:
 - a) ALL TOP AND BOTTOM CHORD SHOP SPLICES TO BE COMPLETE PENETRATION TYPE WELDS.

CONCRETE NOTES

- 1) CONCRETE MIX DESIGN, MATERIALS, QUALITY, MIXING, PLACEMENT, FINISHING AND TESTING SHALL BE IN ACCORDANCE WITH THE REQUIREMENTS OF SECTION 501 OF THE STATE OF ALASKA DEPARTMENT OF TRANSPORTATION AND PUBLIC FACILITIES CONTRACT DOCUMENTS AND SPECIFICATIONS FOR PROJECT NO. 68092/0932(052).
- 2) STAY IN PLACE GALVANIZED FORM DECK SHALL BE USED ON THE BRIDGE. FORM DECK SHALL BE SHOP ATTACHED TO FLOOR BEAMS VIA SELF-DRILLING FASTENERS, WELDING OR POWER ACTUATED FASTENERS. LONGITUDINAL SHEET LAPS SHALL BE ATTACHED WITH SELF-DRILLING FASTENERS AT 36" MAXIMUM SPACING. THE ATTACHMENT OF THE FORM DECK TO THE FLOOR BEAMS IS ONLY NECESSARY TO KEEP THE FORM DECK IN PLACE DURING TRANSPORTATION AND DURING THE CONCRETE PLACEMENT. THE FORM DECK IS NOT REQUIRED FOR DIAPHRAGM ACTION OR COMPOSITE ACTION AND PROVIDES NO STRUCTURAL BENEFIT TO THE TRUSS OR THE DECK AFTER THE CONCRETE IS SET.
- 3) MATERIALS
 - a) CONCRETE: CLASS A(AE): f'c = 4000 psi AT 28 DAY
AIR CONTENT OF 5% +/- 1%
145 PCF MAX
 - b) REINFORCING: ASTM A 706 GRADE 60 AND ASTM A 775 FOR EPOXY COATING
- 4) CONCRETE TO BE FINISHED WITH A HEAVY BROOM FINISH PER SECTION 501-3.07(3).
- 5) GROOVED CONTRACTION JOINTS SHALL BE PUT IN PER THE CONTRACT DOCUMENTS OR AT THE DISCRETION OF THE ENGINEER AND OWNER. IF CONTRACTION JOINTS ARE USED, THEY SHALL BE PLACED OVER THE CENTERLINE OF THE FLOOR BEAMS AS REQUIRED.
- 6) ALL REINFORCING STEEL SHALL BE EPOXY COATED UNLESS NOTED OTHERWISE IN THE CONTRACT DOCUMENTS OR AS APPROVED BY THE ENGINEER AND OWNER. EPOXY COATING IS TO EXTEND THE LIFE OF THE DECK AND IS NOT REQUIRED TO MEET THE DESIGN STRENGTH REQUIREMENTS.
- 7) THE CONTRACTOR MUST EXERCISE CARE TO CONTROL TRAFFIC AND STORAGE OF MATERIALS ON THE FORM DECK BEFORE CONCRETE PLACEMENT ON THE DECK.
- 8) LONGITUDINAL BARS MAY BE SPLICED IF REQUIRED. SPLICE SHALL BE LOCATED AT THE ONE-THIRD POINT OF THE BAY SPAN AND STAGGERED EVERY OTHER LONGITUDINAL BAR. REQUIRED SPLICE LENGTHS ARE AS FOLLOWS.

BAR SIZE	NORMAL WEIGHT CONCRETE (145 PCF)
#4	31"
#5	39"
#6	46"
#7	62"
#8	81"
#9	103"



DATA PLATE DETAIL

Record Drawings have been reviewed by the Project Engineer, and represent to the best of my knowledge, the project as constructed.

PE *[Signature]* Date 12-Aug-15



BR14-01750
DESIGN BY ENL
DRAWN BY RDH
CHECKED BY ENL
SHEET NO.
T002
OF
T003

REV	STATUS	BY	DATE
AB	FINAL AS BUILT DRAWINGS	RH	06/02/2015

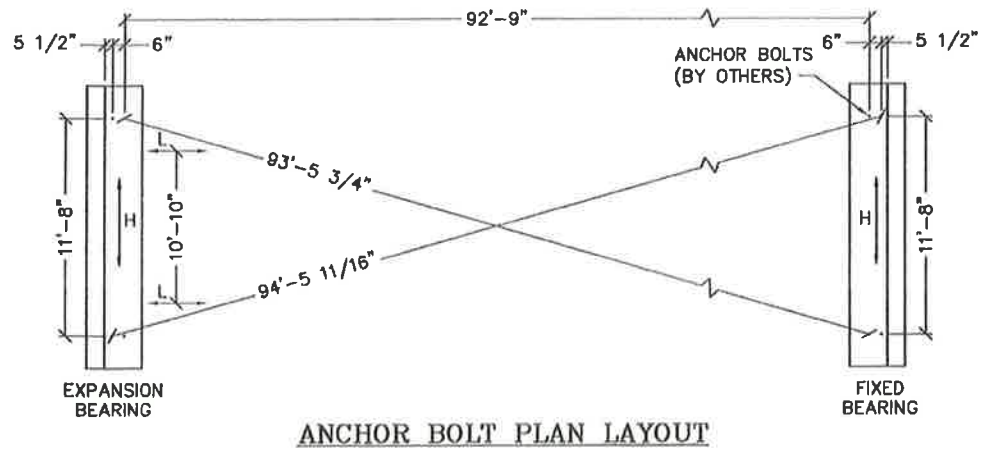
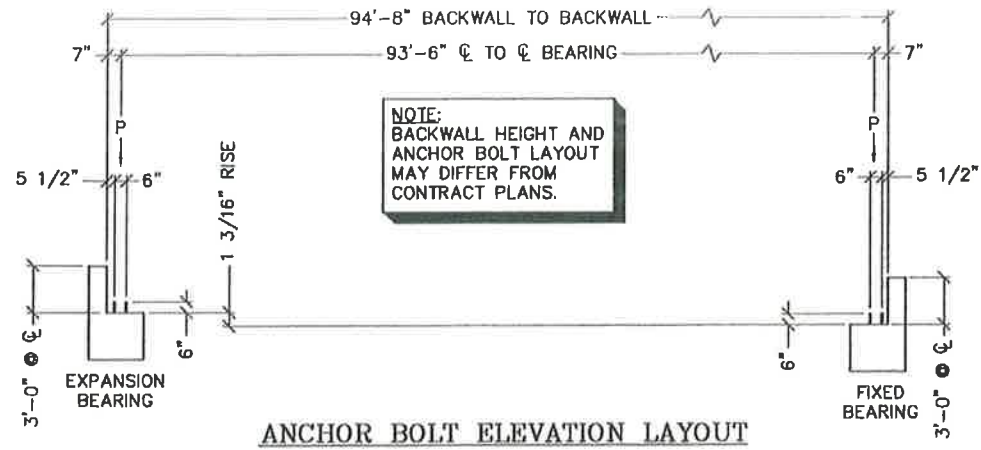
PROPRIETARY AND CONFIDENTIAL
 THIS DRAWING IS THE SOLE PROPERTY OF BIG R MANUFACTURING, LLC, AND CONTAINS PROPRIETARY INFORMATION FOR USE WITH THIS PROJECT ONLY. ANY REPRODUCTION IN PART OR AS A WHOLE WITHOUT WRITTEN PERMISSION IS STRICTLY PROHIBITED.

P.O. Box 1290 • Greeley, Colorado 80632-1290
 (970) 356-9600 • Fax: (970) 356-9621 • www.bigrbridge.com

94'-2" x 10'-4"

JORDAN CREEK PEDESTRIAN BRIDGE

JUNEAU, AK
TRUCANO CONSTRUCTION



BRIDGE REACTIONS	P (LBS)	H (LBS)	L (LBS)
DEAD	26,000		
LIVE (90 PSF)	21,900		
VEHICLE (H10)	10,100		
WIND (90 MPH)	±7,100	18,100	
OVERTURNING (20 PSF)	-7,200		
SEISMIC		20,800	20,800
THERMAL			3,900

"P": FOUR PER BRIDGE
 "H": TWO PER BRIDGE (ONE PER ABUTMENT)
 "L": FOUR PER BRIDGE
 LIFTING WEIGHT = 31,500 LBS
 (FULL STRUCTURE NOT INCLUDING WEIGHT OF CONCRETE)

NOTE:
 ANCHOR BOLTS ARE DESIGNED BY BIG R BRIDGE FOR STEEL STRENGTH IN SHEAR AND TENSION OF THE ANCHOR BOLT ONLY. ALL DESIGN CONSIDERATIONS REGARDING CONCRETE BREAKOUT STRENGTH IN SHEAR AND TENSION, PULLOUT STRENGTH, CONCRETE SIDE-FACE BLOWOUT STRENGTH, CONCRETE PRYOUT STRENGTH, EMBEDMENT DEPTH, TYPE OF ANCHORAGE OR ANY OTHER CONCRETE FAILURE MODES ARE NOT CONSIDERED AND ARE NOT THE RESPONSIBILITY OF BIG R BRIDGE. IF LARGER DIAMETER BOLTS ARE REQUIRED TO MEET ANY OF THESE REQUIREMENTS, THAT INFORMATION MUST BE PROVIDED TO BIG R BRIDGE PRIOR TO BEGINNING ANY FABRICATION ON THE BRIDGE.

Record Drawings have been reviewed by the Project Engineer, and represent to the best of my knowledge, the project as constructed.
 PE *[Signature]* Date 12-Aug-15

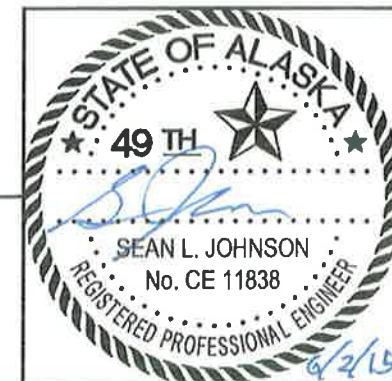
REV	STATUS	BY	DATE
AB	FINAL AS BUILT DRAWINGS	RH	06/02/2015

PROPRIETARY AND CONFIDENTIAL
 THIS DRAWING IS THE SOLE PROPERTY OF BIG R MANUFACTURING, LLC. AND CONTAINS PROPRIETARY INFORMATION FOR USE WITH THIS PROJECT ONLY. ANY REPRODUCTION IN PART OR AS A WHOLE WITHOUT WRITTEN PERMISSION IS STRICTLY PROHIBITED.



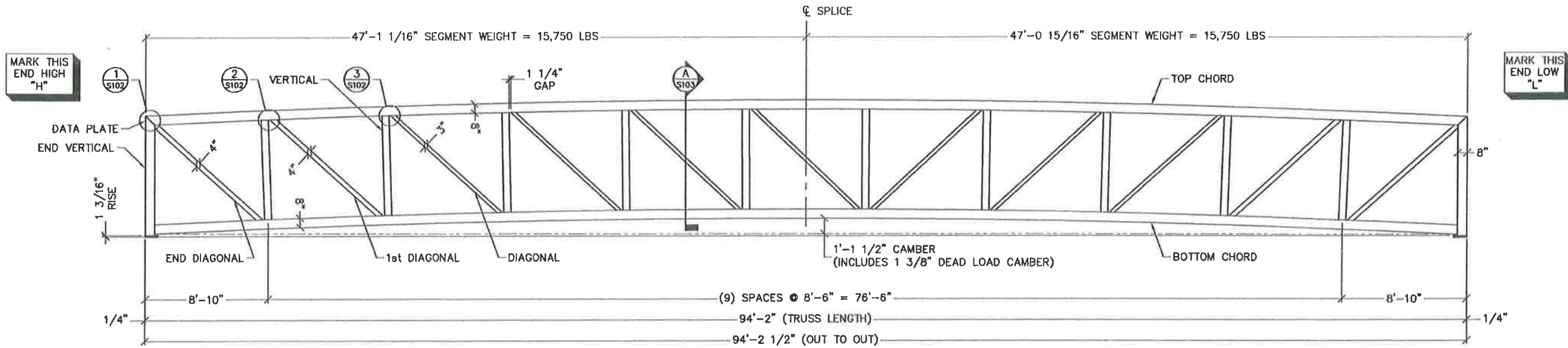
P.O. Box 1290 • Greeley, Colorado 80632-1290
 (970) 356-9600 • Fax:(970) 356-9621 • www.blgrbridge.com

94'-2" x 10'-4"
JORDAN CREEK PEDESTRIAN BRIDGE
 JUNEAU, AK
 TRUCANO CONSTRUCTION

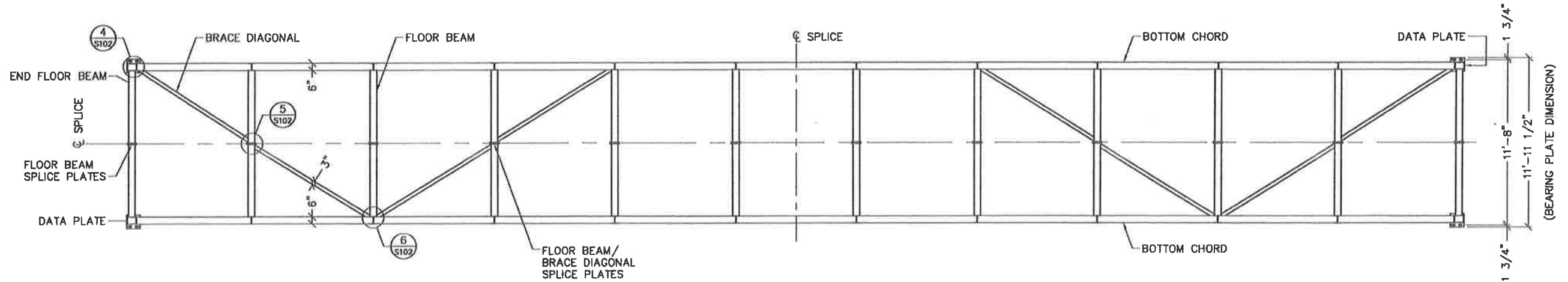


BR14--01750
 DESIGN BY ENL
 DRAWN BY RDH
 CHECKED BY ENL
 SHEET NO. **T003** OF **T003**

6/2/2015 2:45 PM



OUTSIDE ELEVATION



BOTTOM CHORD DETAIL

MEMBERS	SIZE
TOP CHORD	HSS 8x6x1/4
BOTTOM CHORD	HSS 8x6x1/4
END VERTICAL	HSS 8x6x1/4
VERTICAL	W6x20
END DIAGONAL	HSS 6x4x1/4
1st DIAGONAL	HSS 6x4x1/4
DIAGONAL	HSS 5x3x1/4
BRACE DIAGONAL	HSS 4x3x1/4
END FLOOR BEAM	W 16x26

MEMBERS	SIZE
FLOOR BEAM	W 16x26
SIDE DAM (LOW SIDE)	C 6x8.2
SIDE DAM (HIGH SIDE)	C 8x11.5
END DAM	PL 1/4" (BENT)
SAFETY RAIL	L 2x2x3/16
RUB RAIL	C 4x5.4
TOE PLATE	C 4x5.4
BRIDGE DECKING	VULCRAFT 2C 18 GA (G-60)
ANCHOR BOLT (BY OTHERS)	1"Ø (GALVANIZED)

Record Drawings have been reviewed by the Project Engineer, and represent to the best of my knowledge, the project as constructed.
 PE *[Signature]* Date 12-AUG-15



BR14-01750
DESIGN BY ENL
DRAWN BY RDH
CHECKED BY ENL
SHEET NO. S101 OF S107

REV	STATUS	BY	DATE
AB	FINAL AS BUILT DRAWINGS	RH	06/02/2015

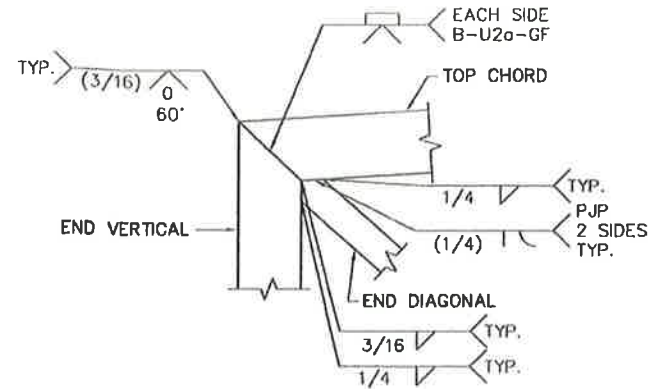
PROPRIETARY AND CONFIDENTIAL
 THIS DRAWING IS THE SOLE PROPERTY OF BIG R MANUFACTURING, LLC. AND CONTAINS PROPRIETARY INFORMATION FOR USE WITH THIS PROJECT ONLY. ANY REPRODUCTION IN PART OR AS A WHOLE WITHOUT WRITTEN PERMISSION IS STRICTLY PROHIBITED.



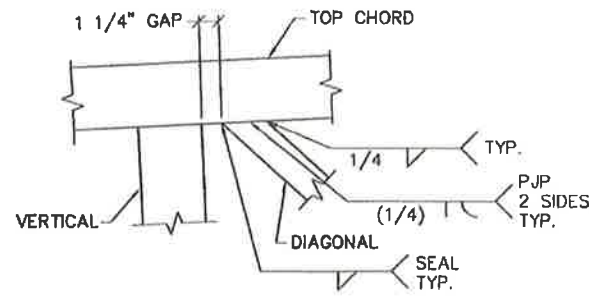
P.O. Box 1290 • Greeley, Colorado 80632-1290
 (970) 356-9600 • Fax: (970) 356-9621 • www.bigrbridge.com

94'-2" x 10'-4"
JORDAN CREEK PEDESTRIAN BRIDGE
 JUNEAU, AK
 TRUCANO CONSTRUCTION

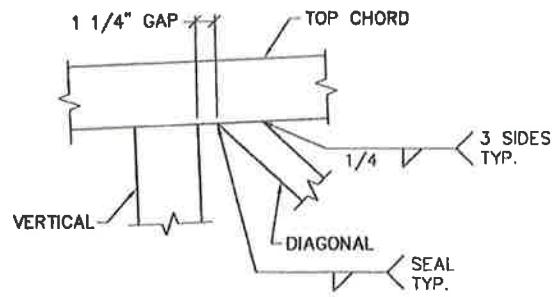
K:\2014\BR\BR14-01750\BR14-01750-P.dwg



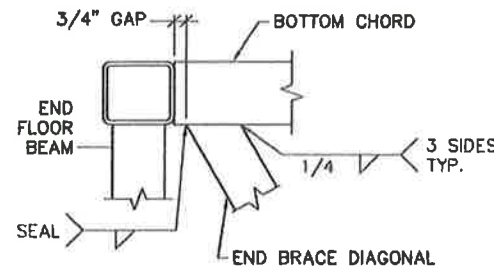
DETAIL 1
S101



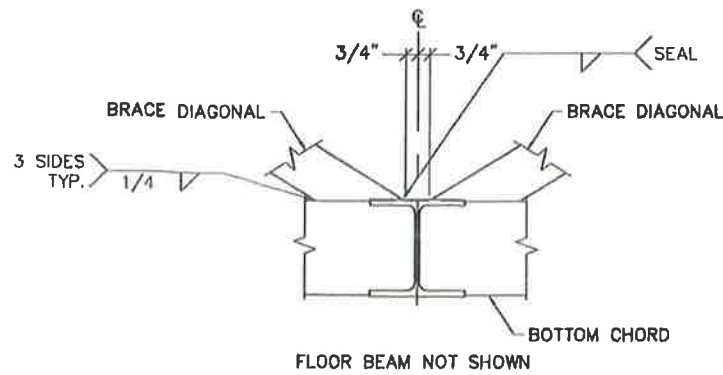
DETAIL 2
S101



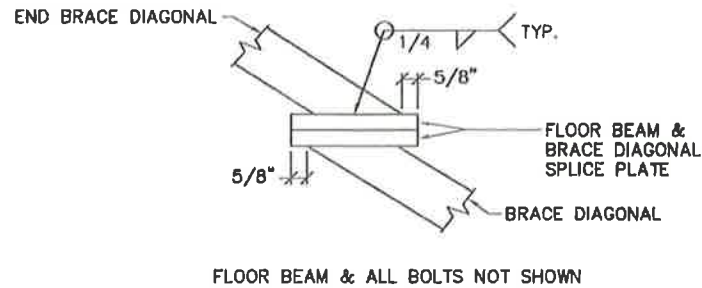
DETAIL 3
S101



DETAIL 4
S101



DETAIL 5
S101



DETAIL 6
S101

Record Drawings have been reviewed by the Project Engineer, and represent to the best of my knowledge, the project as constructed.
 PE *Sean L. Johnson* Date 12-Aug-15

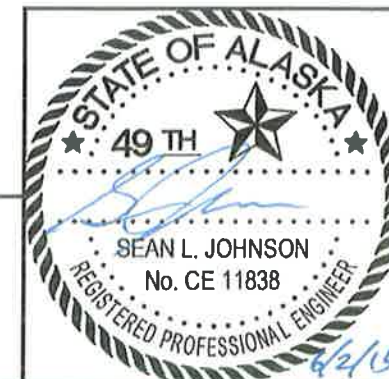
REV	STATUS	BY	DATE
AB	FINAL AS BUILT DRAWINGS	RH	06/02/2015

PROPRIETARY AND CONFIDENTIAL
 THIS DRAWING IS THE SOLE PROPERTY OF BIG R MANUFACTURING, LLC. AND CONTAINS PROPRIETARY INFORMATION FOR USE WITH THIS PROJECT ONLY. ANY REPRODUCTION IN PART OR AS A WHOLE WITHOUT WRITTEN PERMISSION IS STRICTLY PROHIBITED.

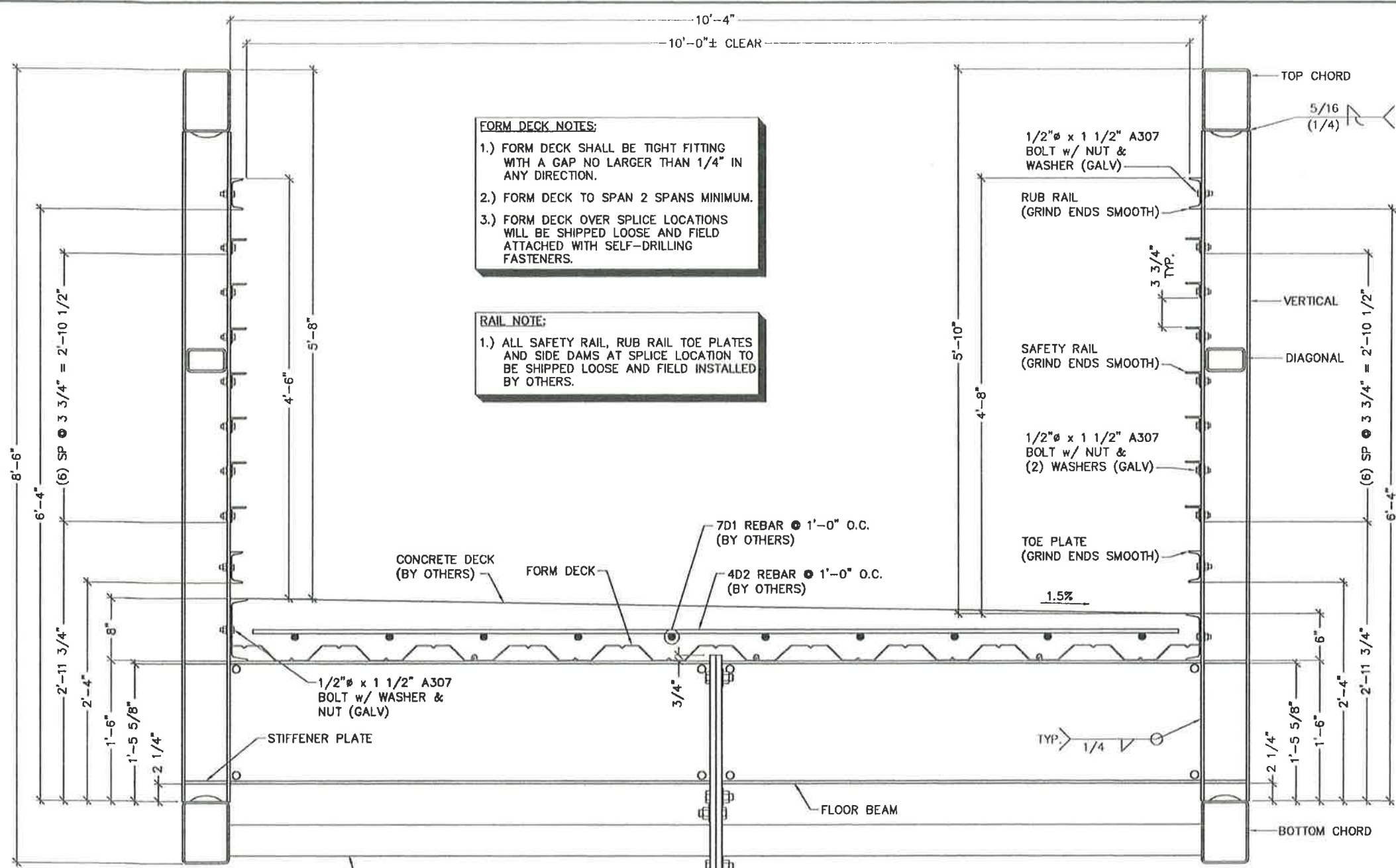


P.O. Box 1290 • Greeley, Colorado 80632-1290
 (970) 356-9600 • Fax:(970) 356-9621 • www.bigrbridge.com

94'-2" x 10'-4"
JORDAN CREEK PEDESTRIAN BRIDGE
 JUNEAU, AK
 TRUCANO CONSTRUCTION



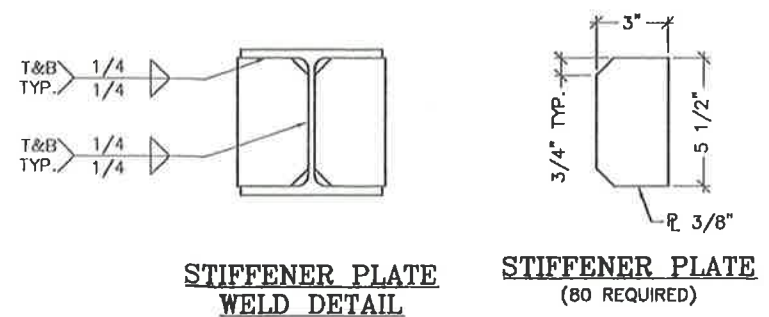
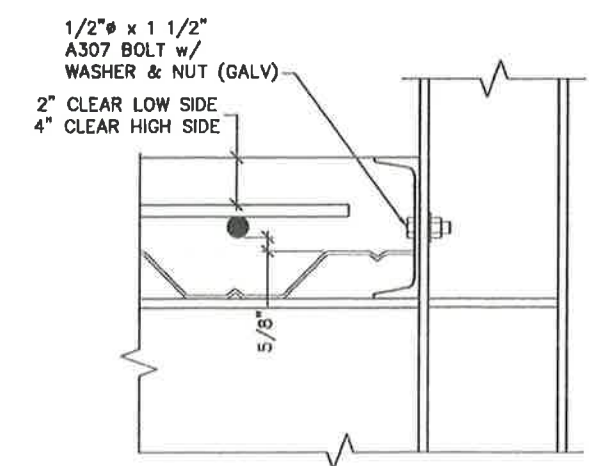
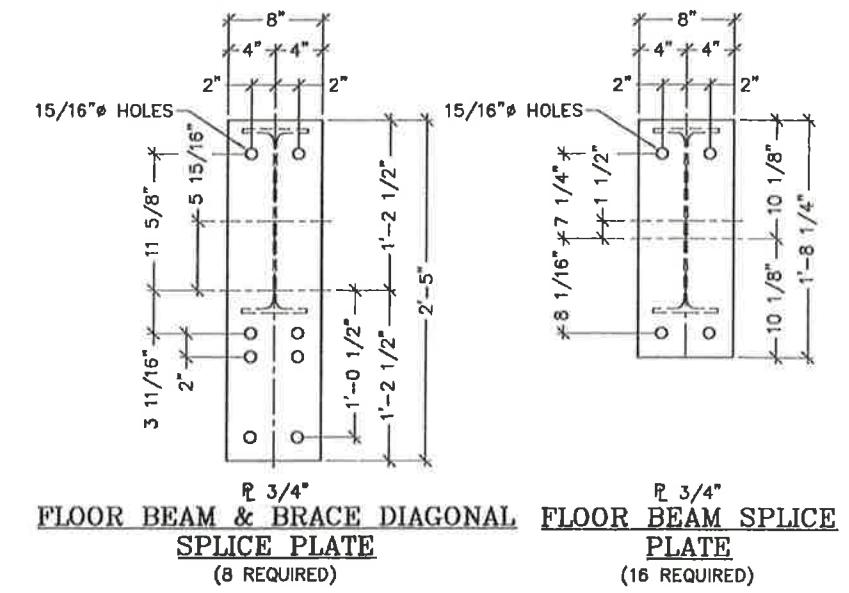
BR14-01750
DESIGN BY ENL
DRAWN BY RDH
CHECKED BY ENL
SHEET NO. S102 OF S107



NOTE: ALL CONCRETE & REBAR BY OTHERS

REBAR SCHEDULE				
MARK	TYPE	QUANTITY	LENGTH	REMARKS
7D1	STRAIGHT	10	93'-10"	EPOXY*
4D2	STRAIGHT	95	9'-10"	EPOXY

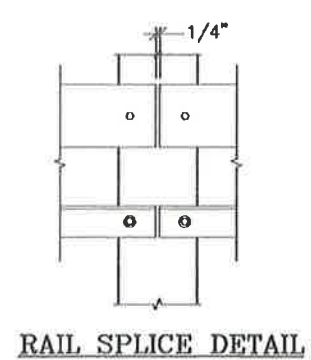
DIGIT PRECEDING LETTER DENOTES SIZE OF REBAR
* SEE CONCRETE NOTE 8 ON T002 FOR SPLICING



CROSS SECTION A S101

Record Drawings have been reviewed by the Project Engineer, and represent to the best of my knowledge, the project as constructed.

PE *[Signature]* Date 12-AUG-15



REV	STATUS	BY	DATE
AB	FINAL AS BUILT DRAWINGS	RH	06/02/2015

PROPRIETARY AND CONFIDENTIAL
 THIS DRAWING IS THE SOLE PROPERTY OF BIG R MANUFACTURING, LLC. AND CONTAINS PROPRIETARY INFORMATION FOR USE WITH THIS PROJECT ONLY. ANY REPRODUCTION IN PART OR AS A WHOLE WITHOUT WRITTEN PERMISSION IS STRICTLY PROHIBITED.



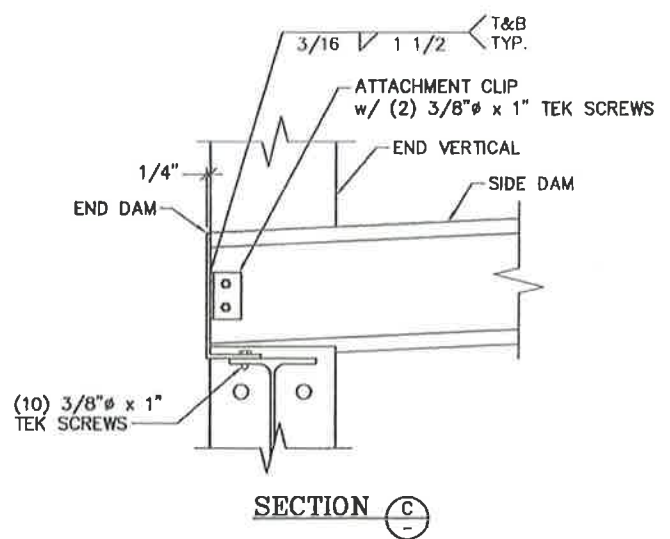
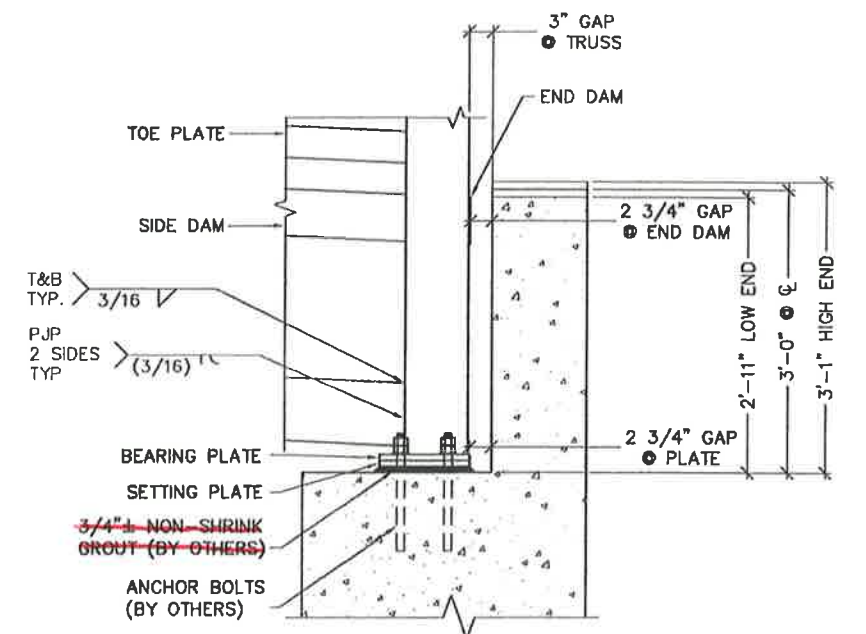
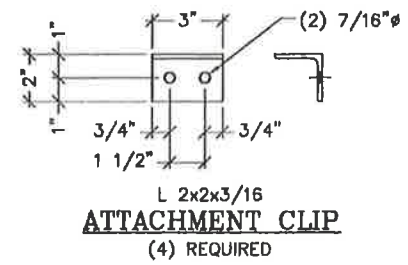
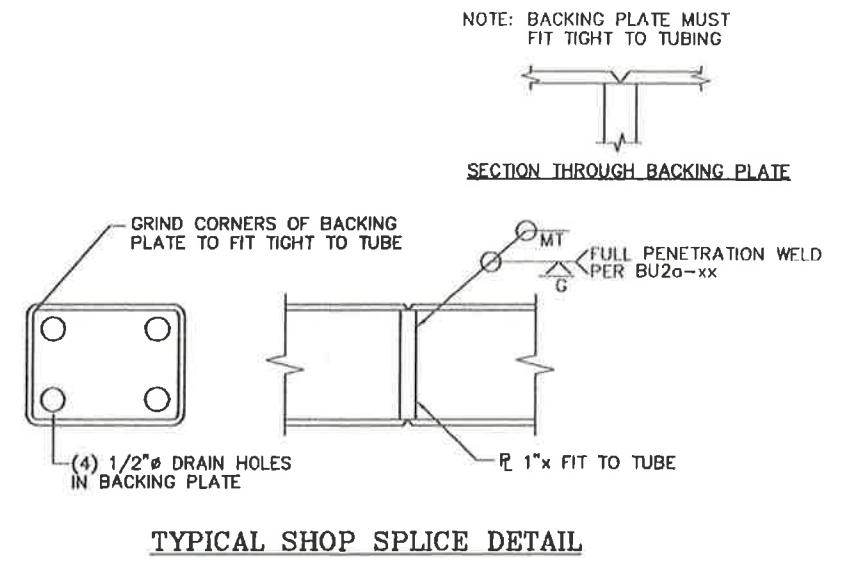
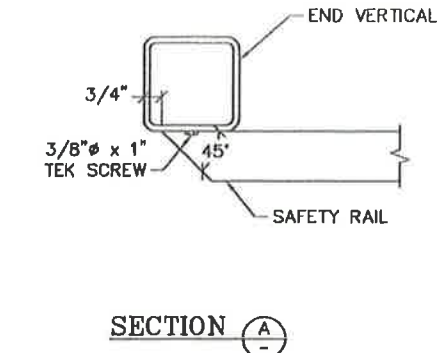
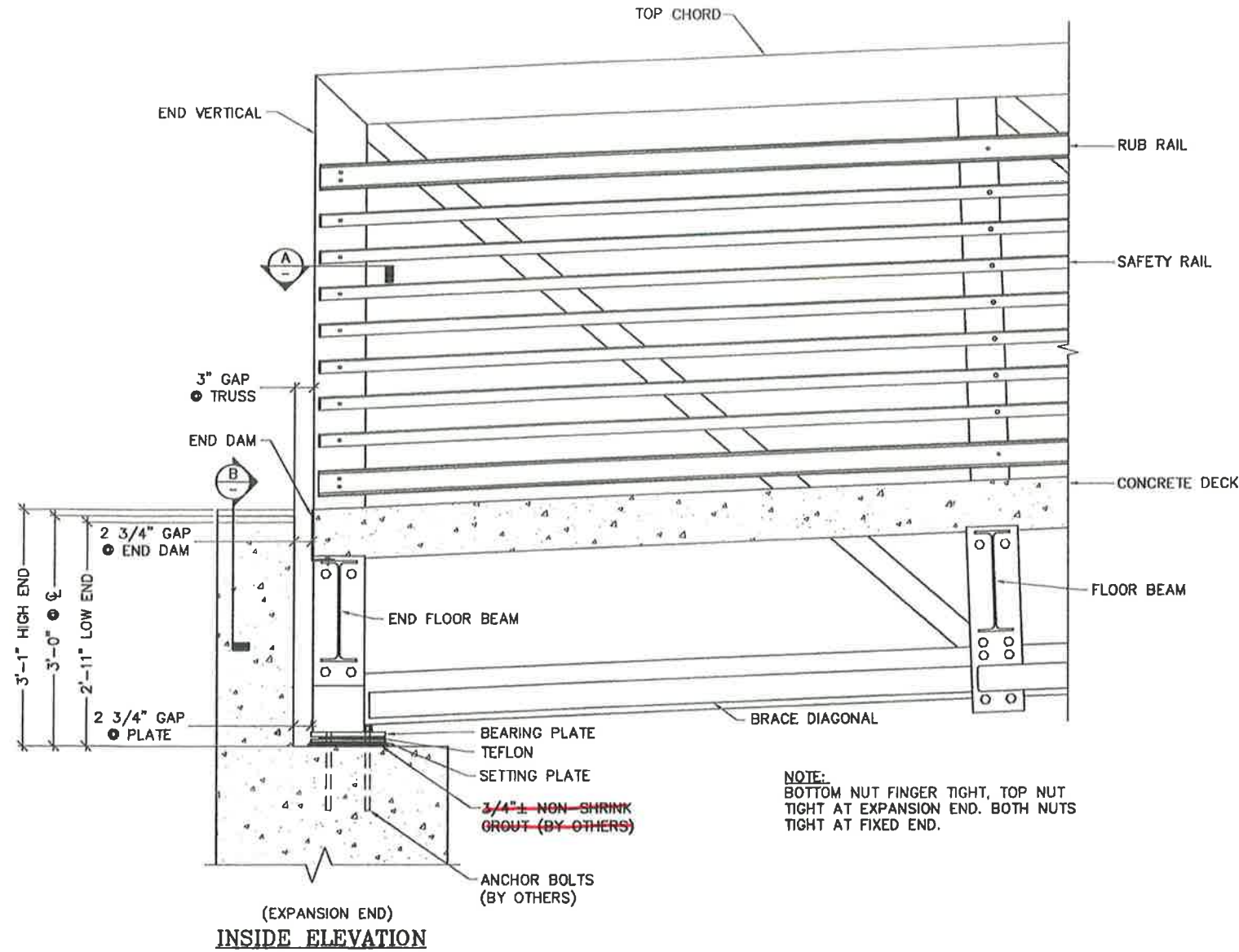
P.O. Box 1290 • Greeley, Colorado 80632-1290
 (970) 356-9600 • Fax:(970) 356-9621 • www.bigrbridge.com

94'-2" x 10'-4"
 JORDAN CREEK PEDESTRIAN BRIDGE
 JUNEAU, AK
 TRUCANO CONSTRUCTION

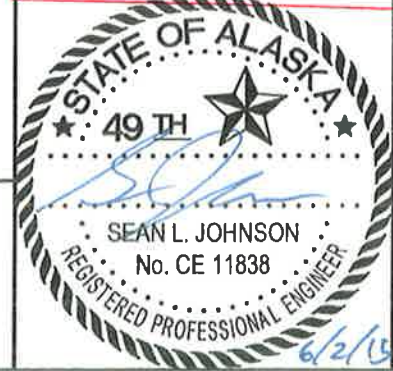


BR14-01750
DESIGN BY ENL
DRAWN BY RDH
CHECKED BY ENL
SHEET NO. S103 OF S107

6/2/2015 2:45 PM



Record Drawings have been reviewed by the Project Engineer, and represent to the best of my knowledge, the project as constructed.
 PE *[Signature]* Date 12-AUG-15



BR14-01750
DESIGN BY ENL
DRAWN BY RDH
CHECKED BY ENL
SHEET NO. S104 OF S107

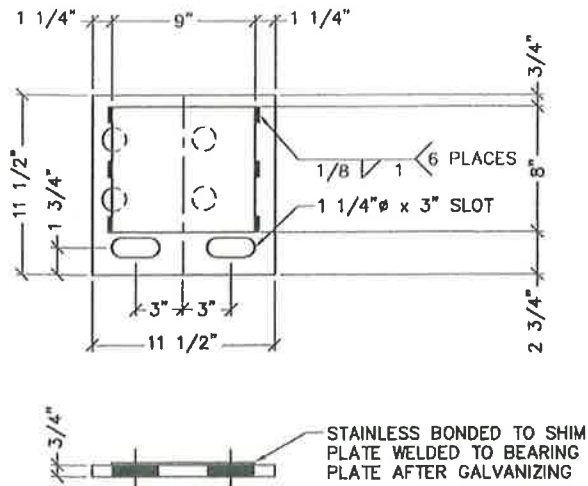
REV	STATUS	BY	DATE
AB	FINAL AS BUILT DRAWINGS	RH	06/02/2015

PROPRIETARY AND CONFIDENTIAL
 THIS DRAWING IS THE SOLE PROPERTY OF BIG R MANUFACTURING, LLC. AND CONTAINS PROPRIETARY INFORMATION FOR USE WITH THIS PROJECT ONLY. ANY REPRODUCTION IN PART OR AS A WHOLE WITHOUT WRITTEN PERMISSION IS STRICTLY PROHIBITED.

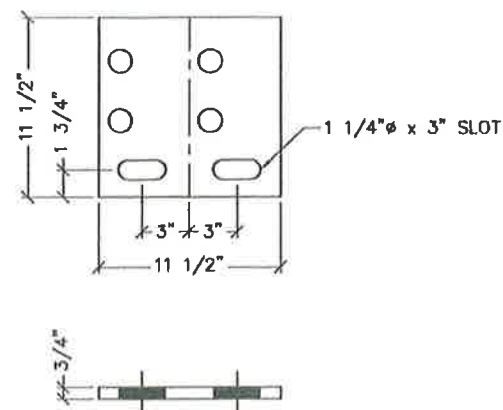
P.O. Box 1290 • Greeley, Colorado 80632-1290
 (970) 356-9600 • Fax: (970) 356-9621 • www.blgrbridge.com

94'-2" x 10'-4"
JORDAN CREEK PEDESTRIAN BRIDGE
 JUNEAU, AK
 TRUCANO CONSTRUCTION

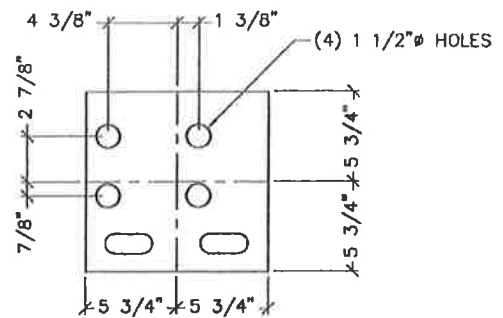
K:\2014\BR\BR14-01750\BR14-01750-P.dwg



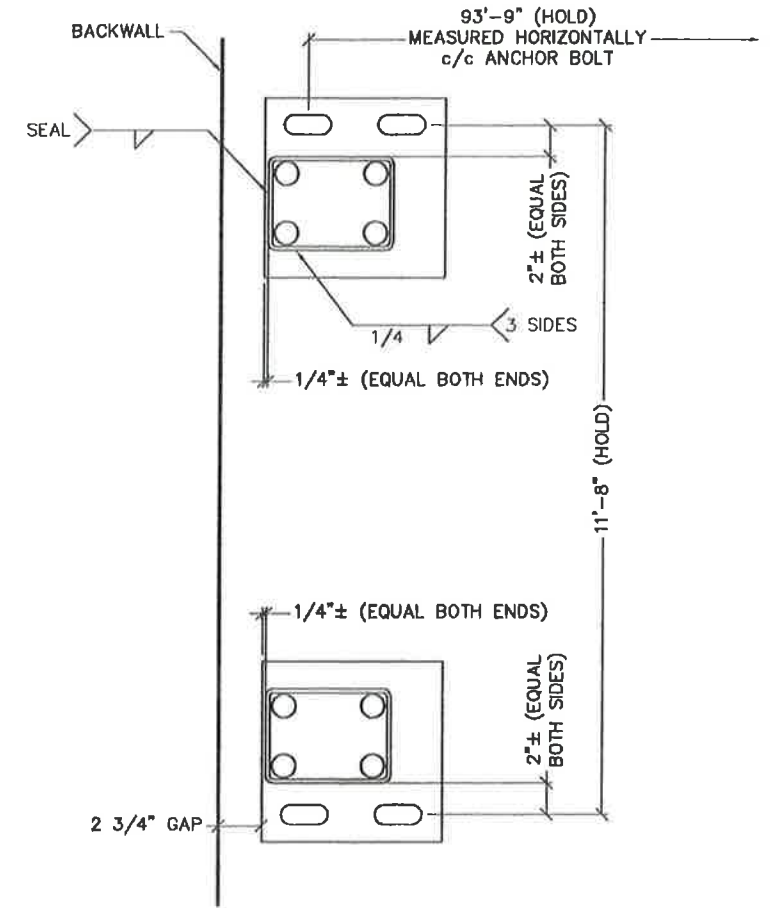
EXPANSION END BEARING PLATE
(2) REQUIRED



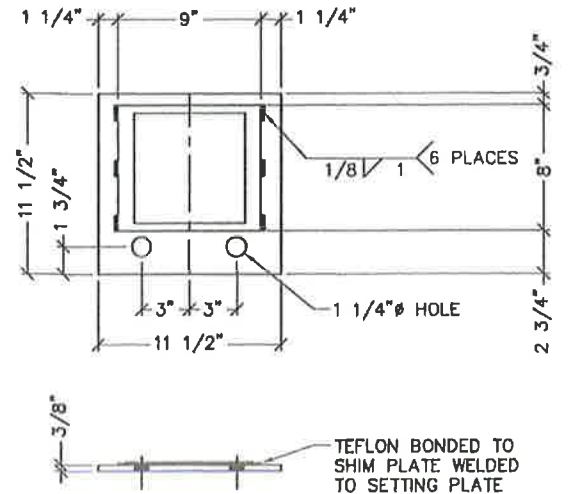
FIXED END BEARING PLATE
(2) REQUIRED



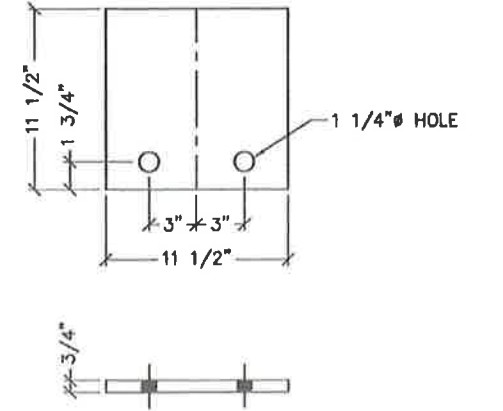
TYPICAL BEARING PLATE DRAIN HOLE DETAIL



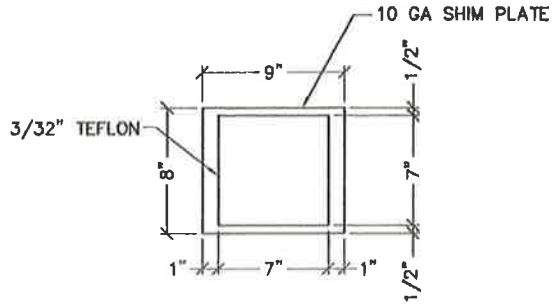
PLAN SHOWING BEARING PLATE CONNECTION



EXPANSION END SETTING PLATE
(2) REQUIRED



FIXED END SETTING PLATE
(2) REQUIRED



TEFLON/SHIM PLATE LAYOUT
(2) REQUIRED

Record Drawings have been reviewed by the Project Engineer, and represent to the best of my knowledge, the project as constructed.
PE *[Signature]* Date 12-AUG-15

REV	STATUS	BY	DATE
AB	FINAL AS BUILT DRAWINGS	RH	06/02/2015

PROPRIETARY AND CONFIDENTIAL
THIS DRAWING IS THE SOLE PROPERTY OF BIG R MANUFACTURING, LLC. AND CONTAINS PROPRIETARY INFORMATION FOR USE WITH THIS PROJECT ONLY. ANY REPRODUCTION IN PART OR AS A WHOLE WITHOUT WRITTEN PERMISSION IS STRICTLY PROHIBITED.



P.O. Box 1290 • Greeley, Colorado 80632-1290
(970) 356-9600 • Fax: (970) 356-9621 • www.bigrbridge.com

94'-2" x 10'-4"
JORDAN CREEK PEDESTRIAN BRIDGE
JUNEAU, AK
TRUCANO CONSTRUCTION



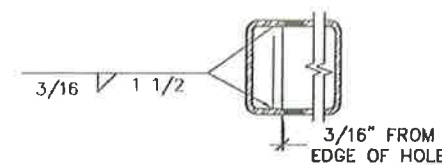
BR14-01750
DESIGN BY ENL
DRAWN BY RDH
CHECKED BY ENL
SHEET NO. S105 OF S107

6/2/2015 2:45 PM

BOLTED SPLICE NOTES:

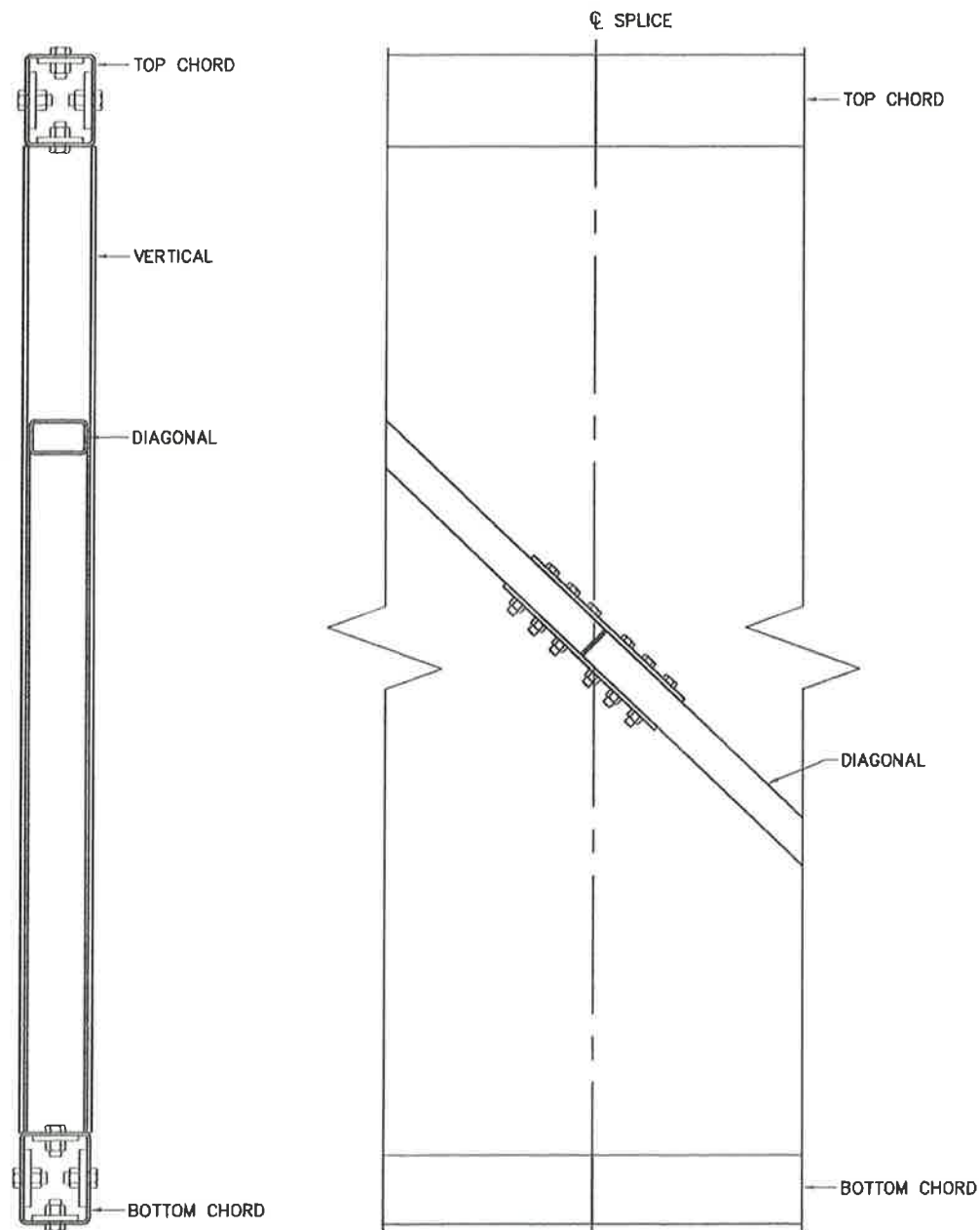
1. WASHERS ARE NOT PROVIDED. PER SECTION 11.5.6.4.4 OF AASHTO LRFD BRIDGE CONSTRUCTION SPECIFICATIONS, SECOND EDITION WITH 2009 INTERIM REVISIONS OR SECTIONS 6.1 AND 6.2 OF RCSC SPECIFICATION FOR STRUCTURAL JOINTS USING ASTM A325 OR A490 BOLTS, 2004 WASHERS ARE NOT REQUIRED.
2. ALL STRUCTURAL BOLTS TO BE INSTALLED PER THE TURN-OF-NUT INSTALLATION METHOD.
3. IF BOLTS DO NOT SMOOTHLY ENGAGE UP TO SNUG-TIGHT, THERE MAY BE AN OBSTRUCTION WITHIN THE THREADS. THE BOLT SHOULD BE REMOVED, THE THREADS ON THE BOLT AND NUT CLEANED AND RE-TAPPED IF NECESSARY TO ALLOW SMOOTH INSTALLATION OF THE BOLT.

MEMBERS	QTY	THICKNESS	SPLICE PLATE SIZE	HOLES	BOLTS	BOLT QTY
T&B CHORD SIDE SPLICE PLATE	8	5/8"	5" x 3'-0"	1 1/16"	1"Ø x 2 1/4" A325 T1	80
T&B FACE CHORD SPLICE PLATE	8	5/8"	4" x 2'-5"	1 1/16"	1"Ø x 2 1/4" A325 T1	64
DIAGONAL SPLICE PLATE	4	3/8"	4 1/2" x 1'-6"	13/16"	3/4"Ø x 4 3/4" A325 T1	12
DIAGONAL STIFFENER PLATE	4	3/8"	2 1/2" x 9"	-	-	-

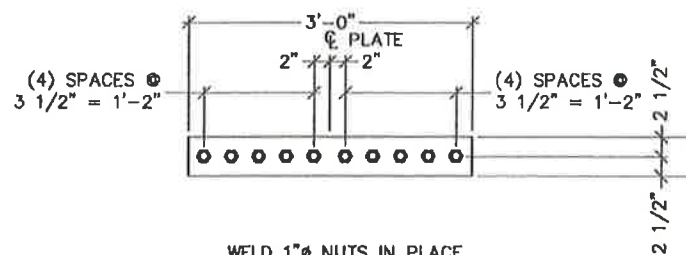


TYPICAL SPLICE STIFFENER

NOTE: STIFFENER PLATES ARE FLUSH ON THE INSIDE OF THE SPLICED DIAGONALS AND SPLICED BRACE DIAGONALS

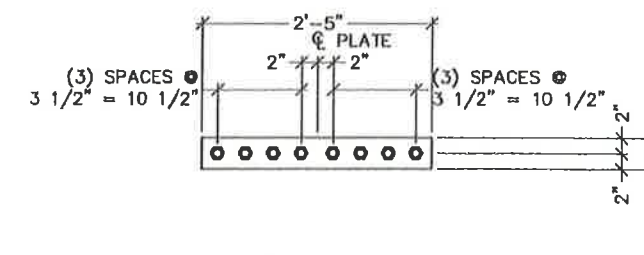


SPLICE DETAILS



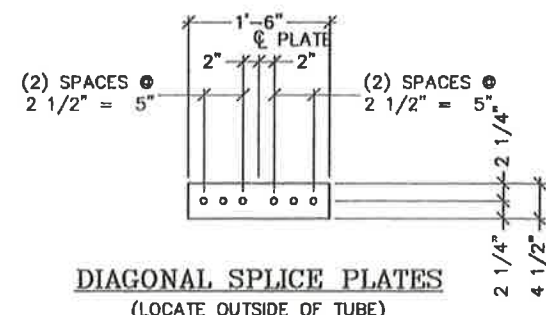
WELD 1"Ø NUTS IN PLACE
(2 OPPOSITE SIDES EA. NUT)

TOP & BOTTOM SIDE CHORD SPLICE PLATES
(LOCATE INSIDE OF TUBE)



WELD 1"Ø NUTS IN PLACE
(2 OPPOSITE SIDES EA. NUT)

TOP & BOTTOM CHORD FACE SPLICE PLATES
(LOCATE INSIDE OF TUBE)



DIAGONAL SPLICE PLATES
(LOCATE OUTSIDE OF TUBE)

RAIL NOTE:

- 1.) ALL SAFETY RAIL, RUB RAIL TOE PLATES AND SIDE DAMS AT SPLICE LOCATION TO BE SHIPPED LOOSE AND FIELD INSTALLED BY OTHERS.

Record Drawings have been reviewed by the Project Engineer, and represent to the best of my knowledge, the project as constructed.
PE *[Signature]* Date 12-Aug-15

K:\2014\BR\BR14-01750\BR14-01750-P.dwg

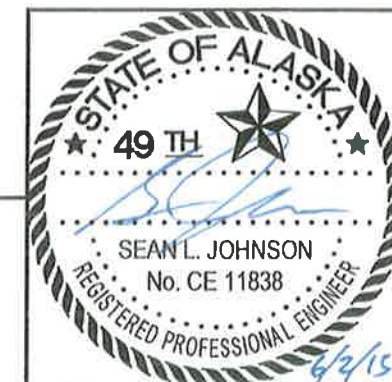
REV	STATUS	BY	DATE
AB	FINAL AS BUILT DRAWINGS	RH	06/02/2015

PROPRIETARY AND CONFIDENTIAL
THIS DRAWING IS THE SOLE PROPERTY OF BIG R MANUFACTURING, LLC. AND CONTAINS PROPRIETARY INFORMATION FOR USE WITH THIS PROJECT ONLY. ANY REPRODUCTION IN PART OR AS A WHOLE WITHOUT WRITTEN PERMISSION IS STRICTLY PROHIBITED.



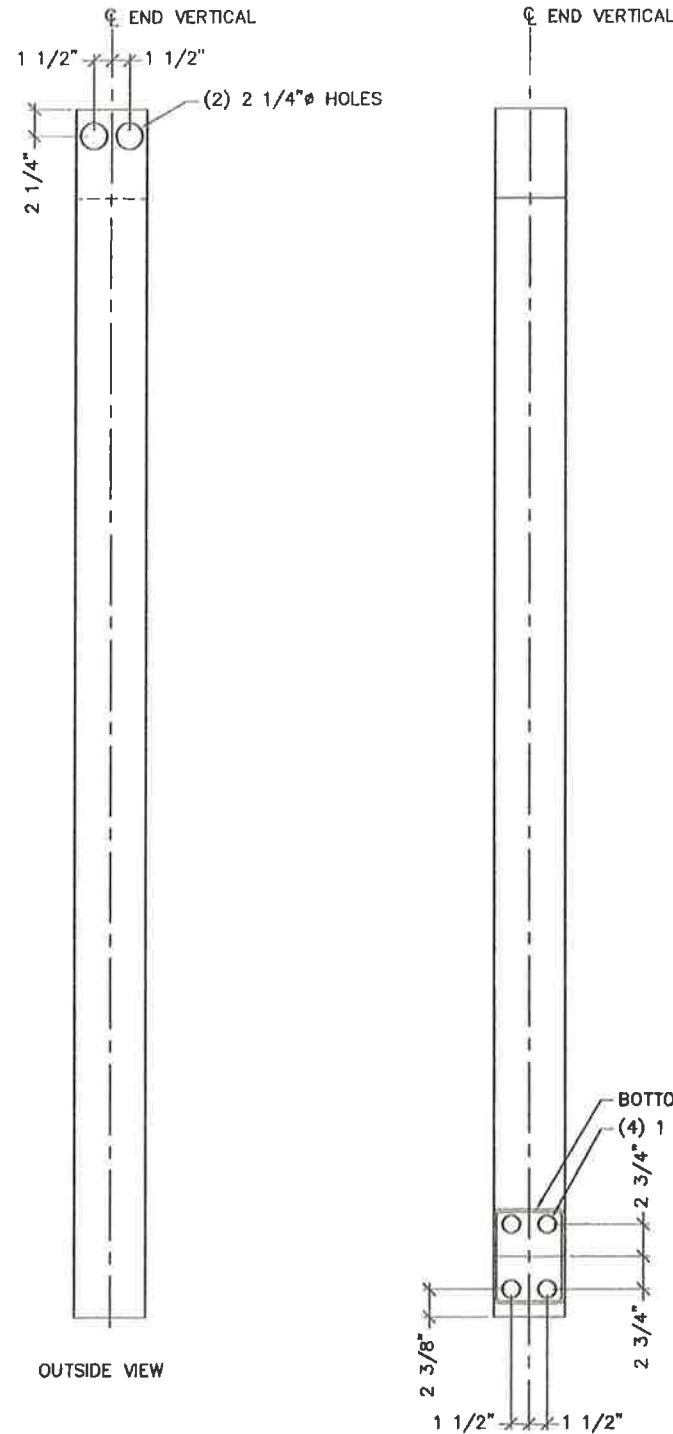
P.O. Box 1290 • Greeley, Colorado 80632-1290
(970) 356-9600 • Fax:(970) 356-9621 • www.bigrbridge.com

94'-2" x 10'-4"
JORDAN CREEK PEDESTRIAN BRIDGE
JUNEAU, AK
TRUCANO CONSTRUCTION

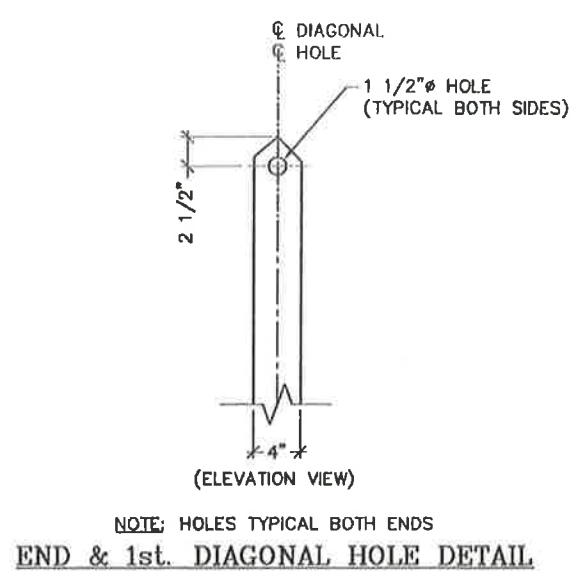


BR14-01750
DESIGN BY ENL
DRAWN BY RDH
CHECKED BY ENL
SHEET NO.
S106
OF
S107

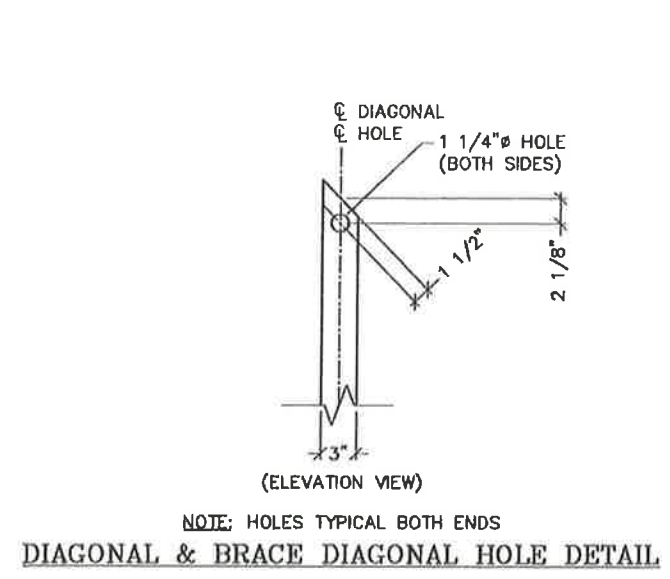
6/2/2015 2:45 PM



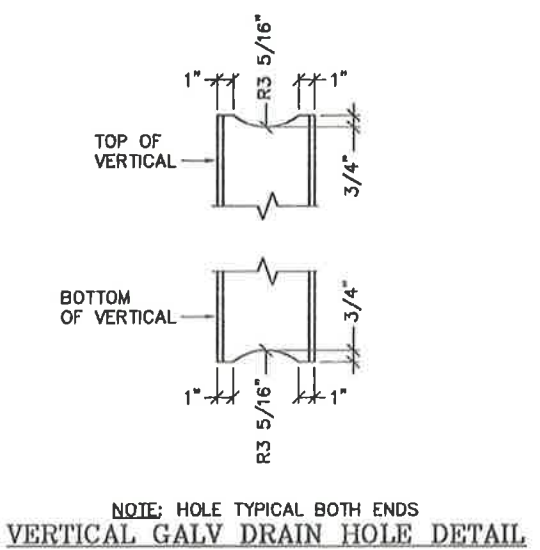
END VERTICAL GALVANIZING HOLE DETAIL



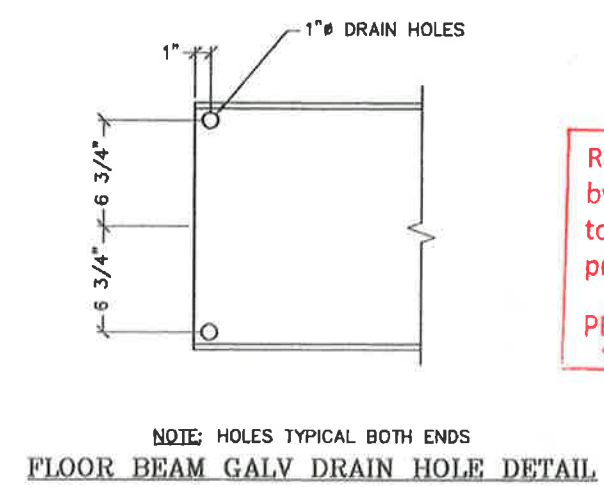
NOTE: HOLES TYPICAL BOTH ENDS
END & 1st. DIAGONAL HOLE DETAIL



NOTE: HOLES TYPICAL BOTH ENDS
DIAGONAL & BRACE DIAGONAL HOLE DETAIL



NOTE: HOLE TYPICAL BOTH ENDS
VERTICAL GALV DRAIN HOLE DETAIL



NOTE: HOLES TYPICAL BOTH ENDS
FLOOR BEAM GALV DRAIN HOLE DETAIL

Record Drawings have been reviewed by the Project Engineer, and represent to the best of my knowledge, the project as constructed.
PE *Johnston* Date 12 Aug 15

K:\2014\BR\BR14-01750\BR14-01750-P.dwg

REV	STATUS	BY	DATE
AB	FINAL AS BUILT DRAWINGS	RH	06/02/2015

PROPRIETARY AND CONFIDENTIAL
THIS DRAWING IS THE SOLE PROPERTY OF BIG R MANUFACTURING, L.L.C. AND CONTAINS PROPRIETARY INFORMATION FOR USE WITH THIS PROJECT ONLY. ANY REPRODUCTION IN PART OR AS A WHOLE WITHOUT WRITTEN PERMISSION IS STRICTLY PROHIBITED.



P.O. Box 1290 • Greeley, Colorado 80632-1290
(970) 356-9600 • Fax:(970) 356-9621 • www.bigrbridge.com

94'-2" x 10'-4"
JORDAN CREEK PEDESTRIAN BRIDGE
JUNEAU, AK
TRUCANO CONSTRUCTION



BR14-01750
DESIGN BY ENL
DRAWN BY RDH
CHECKED BY ENL
SHEET NO. S107 OF S107